

# For sale



## W6122 County Road 346, Wallace, MI, 49893

Offered at \$219,900

Wallace MI home on 31.59 wooded acres and two deer sands. Home was completely gutted in 2022. Ranch with open concept living, two bdrms, one bath, particle basement and garage. Patio door leading to new composite deck of 15 x 30. LP GFA heat with secondary wood stove heat. KT is new since 2022 w/mobile island and includes appliances. Detached garage is 26 x 26, sheds, see list of numerous updates. three rail split fence w/four gates. Country ranch offers 1162 sq ft on MFD home frame w/stick built frame construction. Trails cut in the woods, plenty of wildlife for great hunting. Bring the animals including your horse! Great location and near a boat landing on the Menominee River.

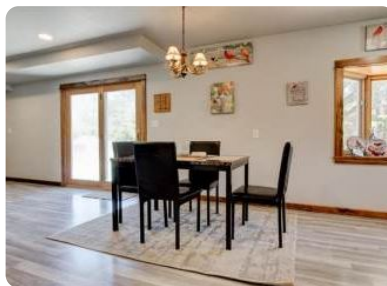
2 Bedrooms

1 Bathrooms

1,162 sqft

31.59 acre (lot size)

Built: 1972



Scan above on mobile device  
for directions to this listing

Assist2Sell Buyers Sellers Realty  
Francine Kitkowski  
(715) 504-0925  
francine@assist2sell.com

Assist2Sell.

All information deemed reliable but not guaranteed. If your property is currently listed this is not meant as a solicitation.  
©2025 Assist2Sell.com - Licensed according to agreed upon terms and conditions.



<https://assist2sell.com/listing/w6122-county-road-346-wallace-mi-49893/3yd-a2sell-822609>