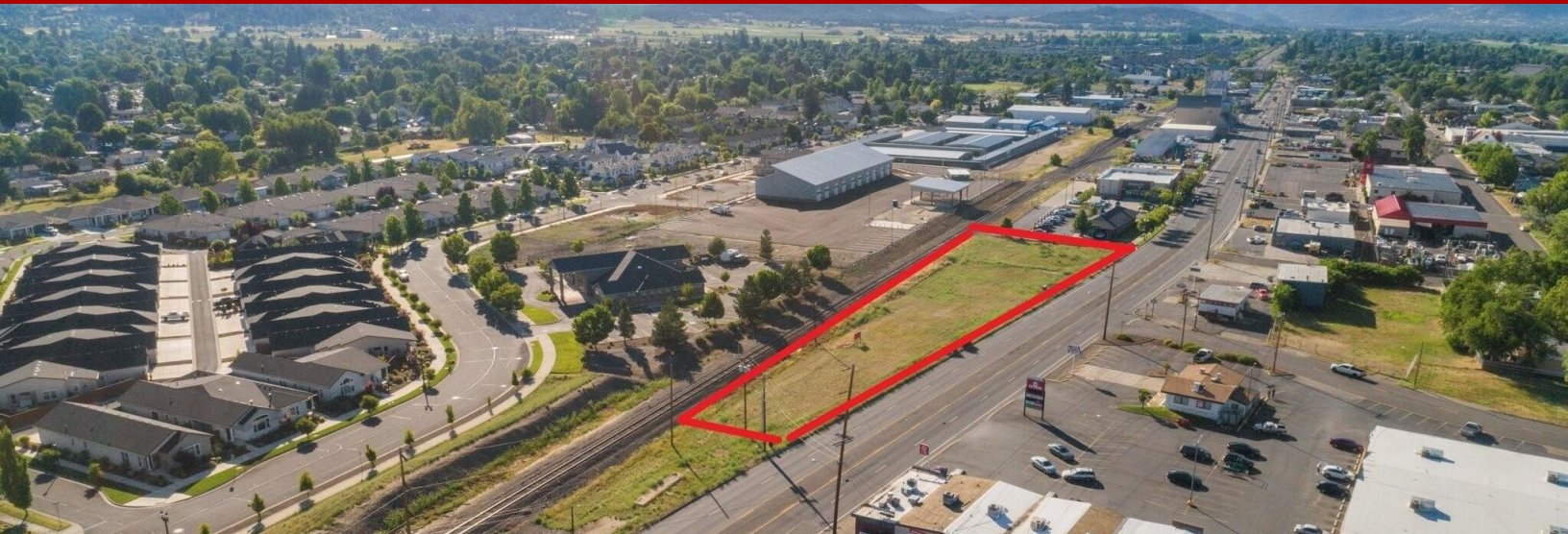


Commercial - Central Point, OR



TI 4500 S Front Street, Central Point, OR, 97502

Offered at \$475,000

This phenomenal commercial lot is aggressively priced & has great visibility and is in a prime location...One of the most desirable areas in Central Point. Huge traffic count with prime frontage. This is the last of the few lots that were available for future commercial build-out. (The property sits right next to Wash N Go Depot/O'Reilly Auto Parts/Dairy Queen) 1.17-acre parcel. Bring your commercial investors, they will love this spot!

0 Bedrooms

0 Bathrooms

Unknown sqft sqft

1.17 acre (lot size)

Built: Unknown year



Scan above on mobile device
for directions to this listing

Assist2Sell
vip@assist2sell.com

Assist2Sell

All information deemed reliable but not guaranteed. If your property is currently listed this is not meant as a solicitation.
©2026 Assist2Sell.com - Licensed according to agreed upon terms and conditions. This listing is courtesy of John L Scott



<https://assist2sell.com/listing/tl-4500-s-front-street-central-point-or-97502/3yd-sormls-220149836>