

Single Family Land - Rye, CO

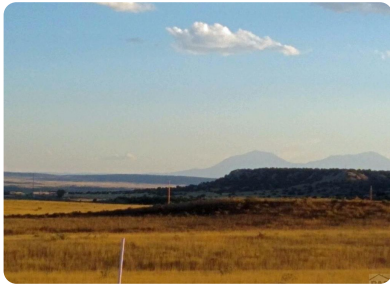


Lot 40 Cedarwood Station, Rye, CO, 81069

Offered at \$45,000

Sixty rolling acres in sparsely populated 35 acre subdivision with views of the Spanish Peaks, Greenhorn Mountain and Pikes Peak! Most of a large catch pond sits on the NE corner of the lot. Easy access on county maintained road to the ranch entrance where roads are also maintained year-round. 25 minutes to I-25 and Colorado City which offers all basic amenities, golfing, a library, park & Lake Beckwith. Another 10 minutes and you have access to millions of acres of National Forest! From I-25 it is just 20 minutes to the major city of Pueblo for employment, recreation, hospitals and a small airport. The location also means easy access to travel south into New Mexico or north to Colorado Springs (with military bases and airport) or Denver. Quiet, solitude and the best of the Colorado lifestyle at an affordable price!

	0 Bedrooms
	0 Bathrooms
	Unknown sqft sqft
	60.02 acre (lot size)
	Built: Unknown year



Scan above on mobile device
for directions to this listing

Assist2Sell
info@assist2sell.com

Assist  Sell.

All information deemed reliable but not guaranteed. If your property is currently listed this is not meant as a solicitation.
©2019 Assist2Sell.com - Licensed according to agreed upon terms and conditions. This listing is courtesy of Colorado Land & Homes or Colorado Land and Homes



<https://assist2sell.com/listing/lot-40-cedarwood-station-rye-co-81069/3yd-parco-182229>