

Commercial - Navarre, FL

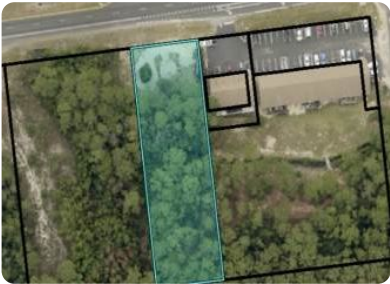


Hwy 98 Navarre Parkway, Navarre, FL, 32566

Offered at \$325,000

HCD Zoned and sett in a very busy location. On highway 98 in Navarre, With 41,000 daily trips going east and 35,000 trips going West its a prime location for your potential Business. Navarre has a 2022 population number of 37,500 people.

0 Bedrooms
0 Bathrooms
Unknown sqft sqft
0.76 acre (lot size)
Built: Unknown year



Scan above on mobile device
for directions to this listing

Assist2Sell Buyers & Sellers Complete Realty LLC
(850) 380-2403
Hilary@wesellpensacola.com



All information deemed reliable but not guaranteed. If your property is currently listed this is not meant as a solicitation.
©2025 Assist2Sell.com - Licensed according to agreed upon terms and conditions. This listing is courtesy of Realty Associates of Santa Rosa, Inc.

