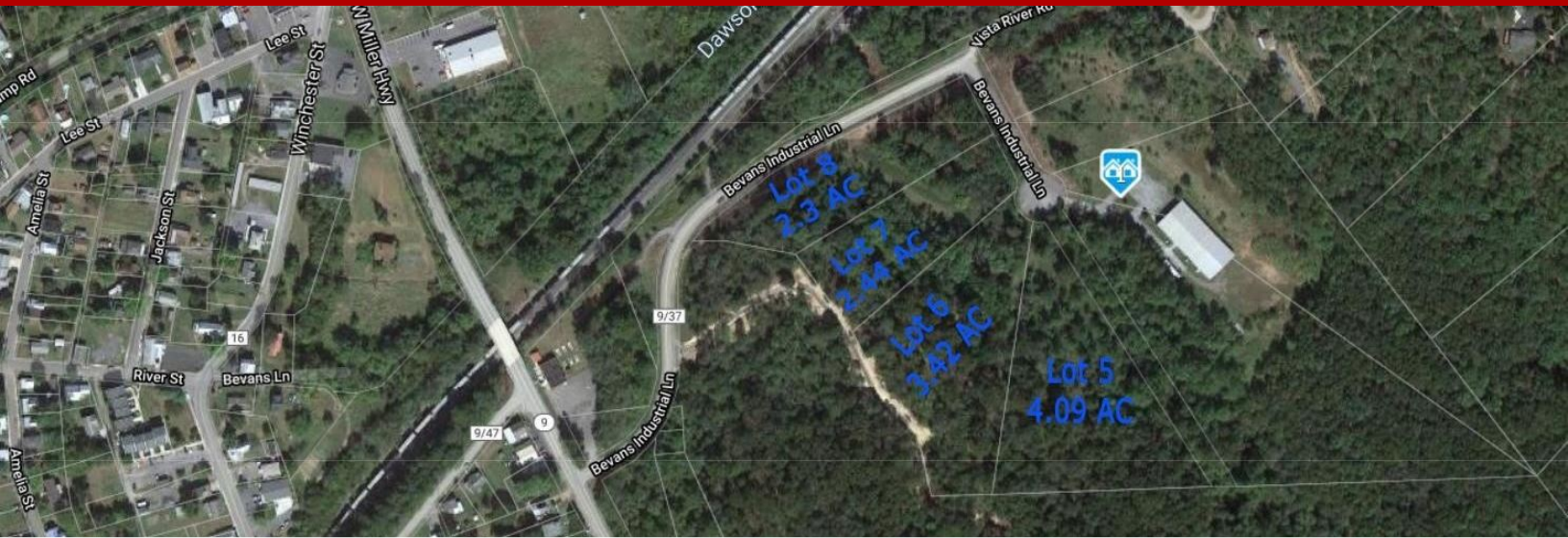


# Commercial - PAW PAW, WV



## Bevans Industrial Lane, Paw Paw, WV, 25434

Offered at \$23,000

Located in the Robert C. Byrd Industrial Park. Priced at \$10,000/AC with public water/sewer available to site. (Lot 8) 2.3 AC, (Lot 7) 2.44 AC, (Lot 6) 3.42 AC, (Lot5) 4.09AC for a total of 12.25 contiguous acres. The Industrial Park offers abundant opportunities for businesses to expand. Close to West Virginia- Maryland state line. Lot 8 (2.3 AC) is cleared and ready for your business. Bring your ideas and let's talk!

0 Bedrooms
0 Bathrooms
Unknown sqft sqft
2.3 acre (lot size)
Built: 1900



Scan above on mobile device  
for directions to this listing

Assist2Sell  
vip@assist2sell.com

Assist2Sell

All information deemed reliable but not guaranteed. If your property is currently listed this is not meant as a solicitation.  
©2026 Assist2Sell.com - Licensed according to agreed upon terms and conditions. This listing is courtesy of Coldwell Banker Premier

