






Traditional, Single-Family - Missouri City, TX

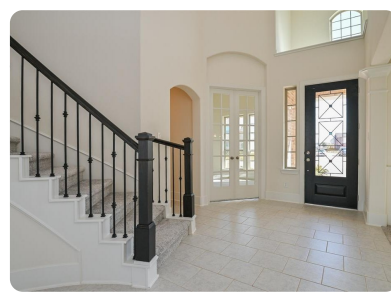


8723 Silver Crest Lane, Missouri City, TX, 77459

Offered at \$404,741

Westin Homes NEW Construction. (Bellagio II, Elevation E) Two story. 4 bedrooms, 3.5 baths. Master suite downstairs with large walk in closet. Formal living and dining room. Spacious island kitchen with breakfast area open to family room. Gameroom upstairs with media room. Covered patio and 2 car garage. When you buy a home in Sienna Plantation, you enjoy an impressive array of amenities, including 100+ acres of parks, miles of walking trails, waterparks, Sienna Golf Club + Grille, Sienna Stables, Camp Sienna Sports Park, Club Sienna and more. You also have immediate access to shopping, dining and professional services. Stop by the Westin Homes model home today to find out more about Sienna!

 4 Bedrooms
 4 Bathrooms
 3,308 sqft
 0.18 acres (lot size)
 Built: 2019



Scan above on mobile device
for directions to this listing

Assist2Sell
info@assist2sell.com

Assist2Sell

All information deemed reliable but not guaranteed. If your property is currently listed this is not meant as a solicitation.
©2020 Assist2Sell.com - Licensed according to agreed upon terms and conditions. This listing is courtesy of Westin Homes



<https://assist2sell.com/listing/8723-silver-crest-lane-missouri-city-tx-77459/3yd-harmlstx-93254454>