




2-Story, Single Family - Eagle Mountain, UT

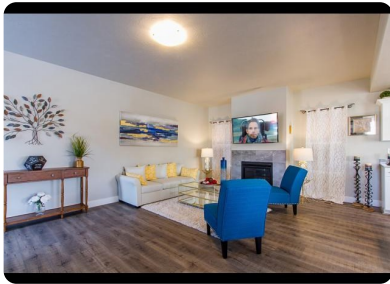


8704 N PEBBLE ALY, Eagle Mountain, UT, 84005

Offered at \$315,000

Our beautiful home is located in the heart of Ranches golf course in east East Eagle Mountain. Only 19 minutes from Traverse Mountain. Highest construction and finish quality of its class at reasonable values. Large Open Floor-plan, Spacious Gourmet Kitchen with Granite, Walk-in Pantry and Stainless Steel Appliances. Huge Grand Master suite! Large laundry room, spacious bedrooms. Come see us!! Several floor plans are available for you. With early reservation you can even have an amazing media room of your own!! Pictures may feature upgrades not included in the price. Square footage figures are provided as a courtesy estimate only and were obtained from Building plans . Buyer is advised to obtain an independent measurement. To get to the model home, go to 3858 Cunninghamhill Drive. Follow the flags to 8641 Cottonwood Ally.Eagle Mountain.

	3 Bedrooms
	3 Bathrooms
	2,628 sqft
	0.05 acre (lot size)
	Built: 2020



Scan above on mobile device
for directions to this listing

Assist2Sell Buyer's 1st Choice Realty, LLC
(801) 489-4300
quinn@assist2sell.com

Assist2Sell

All information deemed reliable but not guaranteed. If your property is currently listed this is not meant as a solicitation.
©2020 Assist2Sell.com - Licensed according to agreed upon terms and conditions. This listing is courtesy of Equity Utah Real Estate



<https://assist2sell.com/listing/8704-n-pebble-aly-eagle-mountain-ut-84005/3yd-wfrmlsut-1639311>