

Unimproved Land - Anna, TX



808 N Church Street, Anna, TX, 75409

Offered at \$189,000

UNDER DEVELOPMENT. Brand New 1 Acre Estate Subdivision. Pick your favorite lot. 23 lots are available. Dirt is being pushed now and concrete streets will be poured soon. This is a luxury subdivision with 2500 SF minimum construction and bring your own builder. Great Anna schools and close to Hwy 121. \$1,000 holds your lot. Builders are encouraged to buy multiple lots as lot inventory is getting harder to find. Lots are expected to be completed and ready to close in mid-January 2023. These are hard to find oversized 1 acre lots on brand new concrete roads in a boutique subdivision close to the big city but with the country feel. 10% down bank loan is available on lots.

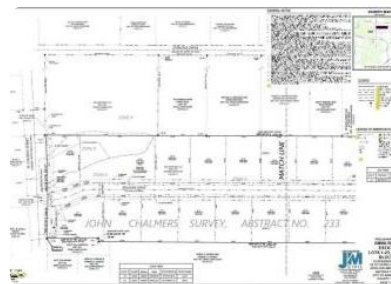
0 Bedrooms

0 Bathrooms

Unknown sqft sqft

1 acre (lot size)

Built: Unknown year



Scan above on mobile device
for directions to this listing

Assist2Sell
vip@assist2sell.com

Assist2Sell

All information deemed reliable but not guaranteed. If your property is currently listed this is not meant as a solicitation.

©2025 Assist2Sell.com - Licensed according to agreed upon terms and conditions. This listing is courtesy of ONE LLC dba BLVD Real Estate



<https://assist2sell.com/listing/808-n-church-street-anna-tx-75409/3yd-ntreis-20170400>