

Office - Montpelier, ID



720 North 4Th, Montpelier, ID, 83254

Offered at \$350,000

CLEAN AND WELL MAINTAINED commercial building on HWY 30 in Montpelier, HWY 30 is a main corridor coming out of Pocatello through SE Idaho to Wyoming. The building has a 30x30 workshop/workspace with an 11x10 garage door. The front space is also 30x30 and is currently used as an office with three spacious rooms. This prime commercial location is one of the few left on HWY 30 and it could be yours!!

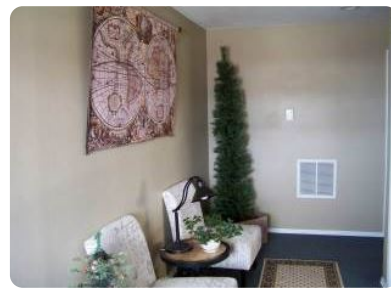
0 Bedrooms

0 Bathrooms

Unknown sqft sqft

0.5 acre (lot size)

Built: 1998



Scan above on mobile device
for directions to this listing

Assist2Sell
vip@assist2sell.com

Assist2Sell.

All information deemed reliable but not guaranteed. If your property is currently listed this is not meant as a solicitation.

©2025 Assist2Sell.com - Licensed according to agreed upon terms and conditions. This listing is courtesy of RE/MAX REAL ESTATE



<https://assist2sell.com/listing/720-north-4th-montpelier-id-83254/3yd-wfrmlsut-1811436>