

Commercial - MONROEVILLE, NJ

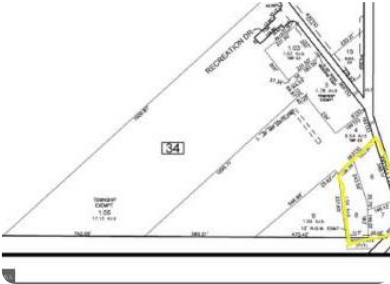


674 Whig Lane, Monroeville, NJ, 08343

Offered at \$549,900

There are 3 lots and all buildings on each lot are part of the sale all in as is condition, buyer responsible for any and all repairs needed for Certificate of Occupancy. Sale consists of Block 34 lot 6, 7 and 8 and will not be separated. This is the entire corner consisting of 2 homes and all commercial structures that include warehouse space, counter service storefronts and garages. Tractor Tailor Truck loading and docking center. This was the Nicholson Farms property. Just about 4 Acres on busy corner. about 2 minutes to route 55 ramps at exit 45. Up and coming developments planned for opposite corner. Other MLS Numbers included with this sale are NJGL261508, NJGL261516, NJGL261536. Any sq. footage, bays, garage spaces and doors are estimated buyer should do their own measurements to verify space meets their needs.

0 Bedrooms
0 Bathrooms
Unknown sqft sqft
0.99 acre (lot size)
Built: 1900



Scan above on mobile device  
for directions to this listing

Assist2Sell  
vip@assist2sell.com



All information deemed reliable but not guaranteed. If your property is currently listed this is not meant as a solicitation.  
©2026 Assist2Sell.com - Licensed according to agreed upon terms and conditions. This listing is courtesy of Century 21 Rau & Johns

