






# Contemporary, Single Family - Temple, TX

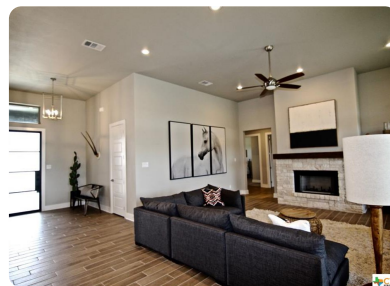
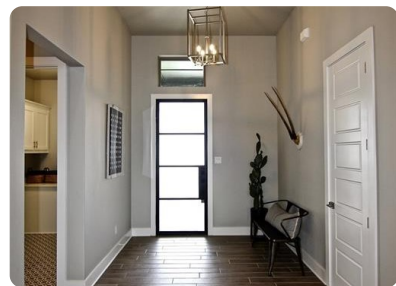


**6426 Clayton Court, Temple, TX, 76502**

Offered at \$405,000

A MUST SEE TO APPRECIATE! NEW HOME IN LEGACY RANCH BY BOBBY ARNOLD HOMES, LTD. LOADED WITH SPECIAL FEATURES TO INCLUDE 10' AND 12' CEILINGS, DURANGO METAL FRONT DOOR, 8' INTERIOR DOORS, VINYL DOUBLE INSULATED WINDOWS, CUSTOM CABINETS, UNDERMOUNT SINKS, WOOD TILE IN COMMON AREAS, FRIGIDAIRE GALLERY SERIES APPLIANCES, CAMBRIA STONE COUNTERTOPS, SPRAY FOAM INSULATION, LIMESTONE/HARDIE BOARD EXTERIOR, CEILING FANS IN ALL BEDROOMS, WALK-IN CLOSETS, FULLY TILED SHOWERS AND MORE. GREAT OPEN FLOOR PLAN WITH SPLIT MASTER SUITE. FULLY LANDSCAPED WITH SPRINKLER SYSTEM, FENCED BACK YARD AND A LARGE COVERED PORCH. TOO MANY EXTRAS TO LIST. SEE HOME FEATURES IN ASSOCIATED DOCS.

	4 Bedrooms
	3 Bathrooms
	2,718 sqft
	0.28 acre (lot size)
	Built: 2018



Scan above on mobile device  
for directions to this listing

Assist2Sell  
info@assist2sell.com

Assist2Sell.

All information deemed reliable but not guaranteed. If your property is currently listed this is not meant as a solicitation.

©2020 Assist2Sell.com - Licensed according to agreed upon terms and conditions. This listing is courtesy of RODNEY DUNN COMPANY, INC



<https://assist2sell.com/listing/6426-clayton-court-temple-tx-76502/3yd-smabor-390521>