

Retail - Farmersville, TX

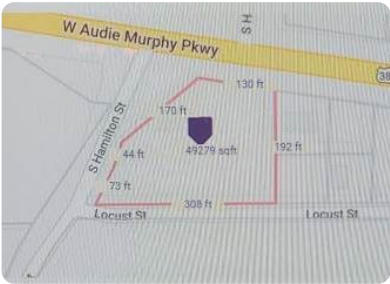


551 W Audie Murphy Parkway, Farmersville, TX, 75442

Offered at \$539,999

Perfect opportunity to own a little over 1 acre of land with Hwy 380 road frontage. There is additional road frontage on the side & back. The building on the property was built in 1935, as an old school house. It has served as a VFW & a Church in the past. Zoning highway commercial, so your business ideas are endless. The building needs some TLC but has so much potential. The property once had an outhouse with plumbing still present. Ample amount of room for parking. Farmersville is growing so bring your business ideas to this unique property.

0 Bedrooms
0 Bathrooms
Unknown sqft sqft
1.16 acre (lot size)
Built: 1935



Scan above on mobile device
for directions to this listing

Assist2Sell
vip@assist2sell.com



All information deemed reliable but not guaranteed. If your property is currently listed this is not meant as a solicitation.
©2025 Assist2Sell.com - Licensed according to agreed upon terms and conditions. This listing is courtesy of Core One Real Estate

