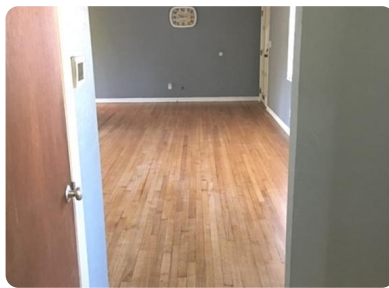
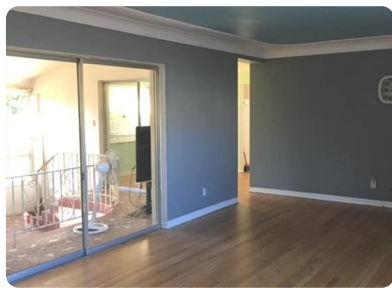


### 4660 22nd Ave S, St Petersburg, FL, 33711

Offered at \$199,900

Smart Buy! 3 bedrooms 3 baths, oversized 2 car garage ?On the edge of Gulfport? close to shopping, the Gulfport district, and the Gulfport Marina. This oversized, perfect family home has everything you?ll need. It has a new central heat & air system installed in 2018. The gorgeous hardwood floors have been re-sanded & polished and a fresh coat of paint on the interior and exterior awaits you. Home features a split bedroom floor plan, a living room, and a large sunken family/game room area with cathedral ceilings overlooking the backyard, which is great for entertaining. The master bedroom is at the rear of the home and has a cedar closet and its own full bathroom with a shower. A circular driveway in the front gives easy access in and out and the large backyard has a new 90? privacy fence along the back with a double gate, alley access, where you can pull your boat or RV trailer in for secure keep. There is a ton of storage space, unique architectural features, room to roam in this perfect family home. Great Investment, close to downtown St Pete, Gulf Beaches and much, much more.

3 Bedrooms
3 Bathrooms
1,720 sqft
0.22 acres (lot size)
Built: 1955



Scan above on mobile device for directions to this listing

Assist2Sell Buyers & Sellers Pro Realty  
Randy Bowman  
(727) 596-2995  
randy@assist2sell.com



All information deemed reliable but not guaranteed. If your property is currently listed this is not meant as a solicitation.  
©2019 Assist2Sell.com - Licensed according to agreed upon terms and conditions.

