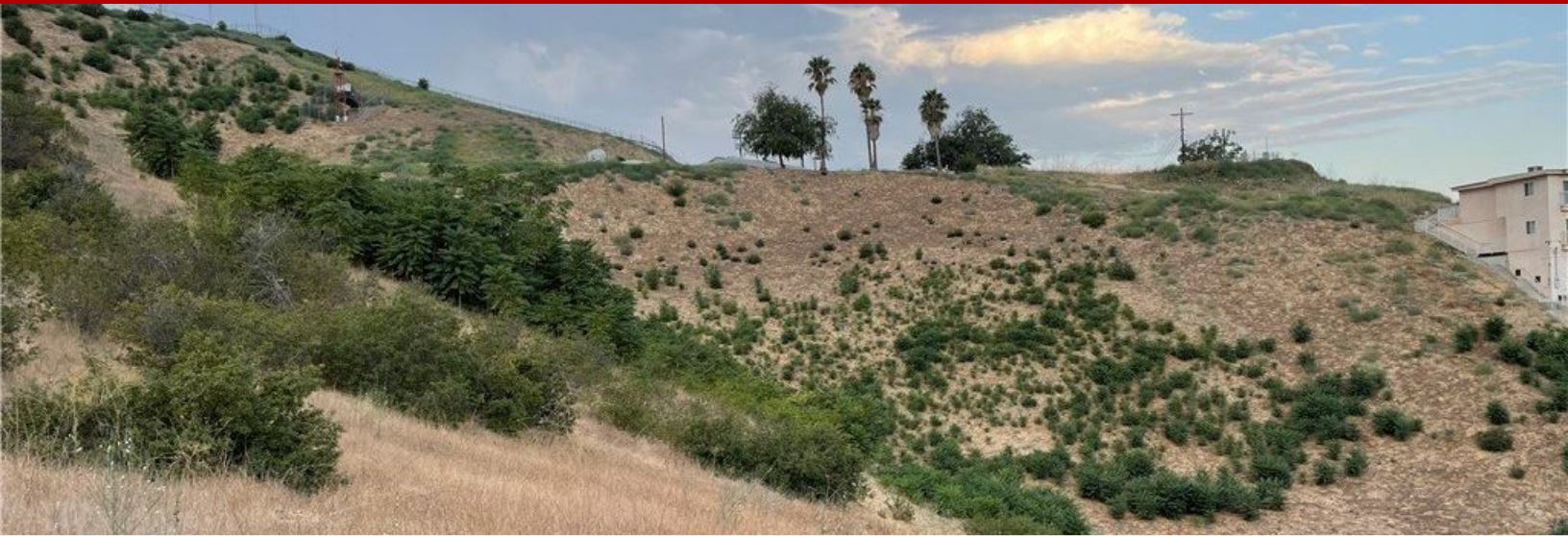


# Land/Lot - Los Angeles, CA



## 4600 Carter Drive, Los Angeles, CA, 90032

Offered at \$38,039,325

OVER 38+ ACRES of raw undeveloped vacant rolling / hillside land within MINUTES of DOWNTOWN L.A. FANTASTIC VIEWS from numerous points on these lands, and which is mostly surrounded by parks, schools, and residential housing. An extremely RARE OPPORTUNITY to develop one of the VERY few EXTREMELY large land parcels available so close to DOWNTOWN LOS ANGELES. A total of 1,656,993 +/- SQ. FT. on TWO (2) adjacent lots APN's #5214-914-001 and 5214-014-002. Great Street access from major routes include Eastern Ave, North Broadway, Huntington Dr., Valley Blvd, Mission Road, Soto St. Alhambra Ave, plus close to several Freeways including #2, #5, #10, #60, #101, #110, #134, and the #710. There are NUMEROUS Area Schools including Huntington Drive Elementary, Glen Alta Elementary, Abraham Lincoln High School, Santa Teresita Elementary, Bravo Medical Magnet School, East College Prep School, Murchison Street Elementary, Woodrow Wilson High School, Cal State, L.A., Multnomah Elementary School, East L.A. College, Esteban Torres High School, Farndale Elementary, Franklin High School, and others. Local Parks are El Sereno Recreation Area, El Sereno Skate Park, Hazard Recreational Center, Rose Hill Park, Lincoln Park, Ascot Hills Park, Ernest Debs Recreational Park, Lower Flat Top Park, Elephant Hill Open Space, Hermon Park (Arroyo Seco Park) and so forth. Nearby Medical Facilities are rated very well, including Keck Medicine, USC County General Hospital, El Sereno Medical Center, Huntington Health Center, etc. Major Attractions sitting close to this parcels include Griffith Park, Chinatown, Little Tokyo, L.A. Zoo, Dodger Stadium, Rose Bowl, Huntington Library, DOWNTOWN L.A., Hollywood, Greek Theatre, Heritage Square Museum, Elysian Park, plus much more. Neighborhood Services such as Lincoln Park DMV and L.A. County Social Services offices are literally within walking distance. These vacant land parcels offer an Unique opportunity to design and create the ideal project, something incredible that most visionaries can only dream about. Site access is available via 4600 CARTER DRIVE (2 separate locations off Carter Drive), plus several other possible entry points from Okell Drive, Bowman Blvd, Minto Court, Richelieu Terrace, Verdemour Avenue, in addition to other streets, but easements from all above have not been verified.

0 Bedrooms

0 Bathrooms

Unknown sqft sqft

15.97 acres (lot size)

Built: Unknown year



Scan above on mobile device  
for directions to this listing

Assist2Sell  
vip@assist2sell.com

Assist2Sell

All information deemed reliable but not guaranteed. If your property is currently listed this is not meant as a solicitation.

©2026 Assist2Sell.com - Licensed according to agreed upon terms and conditions. This listing is courtesy of Keller Williams Pacific Estates



<https://assist2sell.com/listing/4600-carter-drive-los-angeles-ca-90032/3yd-mrmlsca-pw22192381>