

Residential - CAPE CORAL, FL

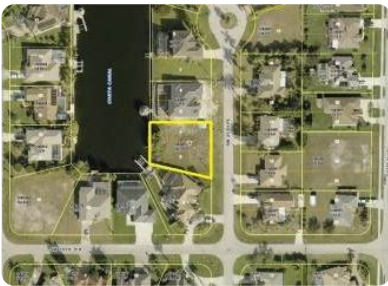


3914 SW 25Th Place, Cape Coral, FL, 33914

Offered at \$349,900

Location Location Location. This oversized Western rear exposure gulf access canal lot in SW Cape Coral's unit 74 has 85 feet of canal frontage. Want to build that home with the larger garage, this could be the lot for you! ALL ASSESSMENTS PAID! No thru traffic makes this location very quiet and private. Consider this parcel today for building or investment.

0 Bedrooms
0 Bathrooms
Unknown sqft sqft
0.29 acre (lot size)
Built: Unknown year



Scan above on mobile device
for directions to this listing

Assist2Sell Partners Realty
(239) 561-2500
eric@wesellleecounty.com



All information deemed reliable but not guaranteed. If your property is currently listed this is not meant as a solicitation.
©2025 Assist2Sell.com - Licensed according to agreed upon terms and conditions. This listing is courtesy of Schooner Bay Realty, Inc.

