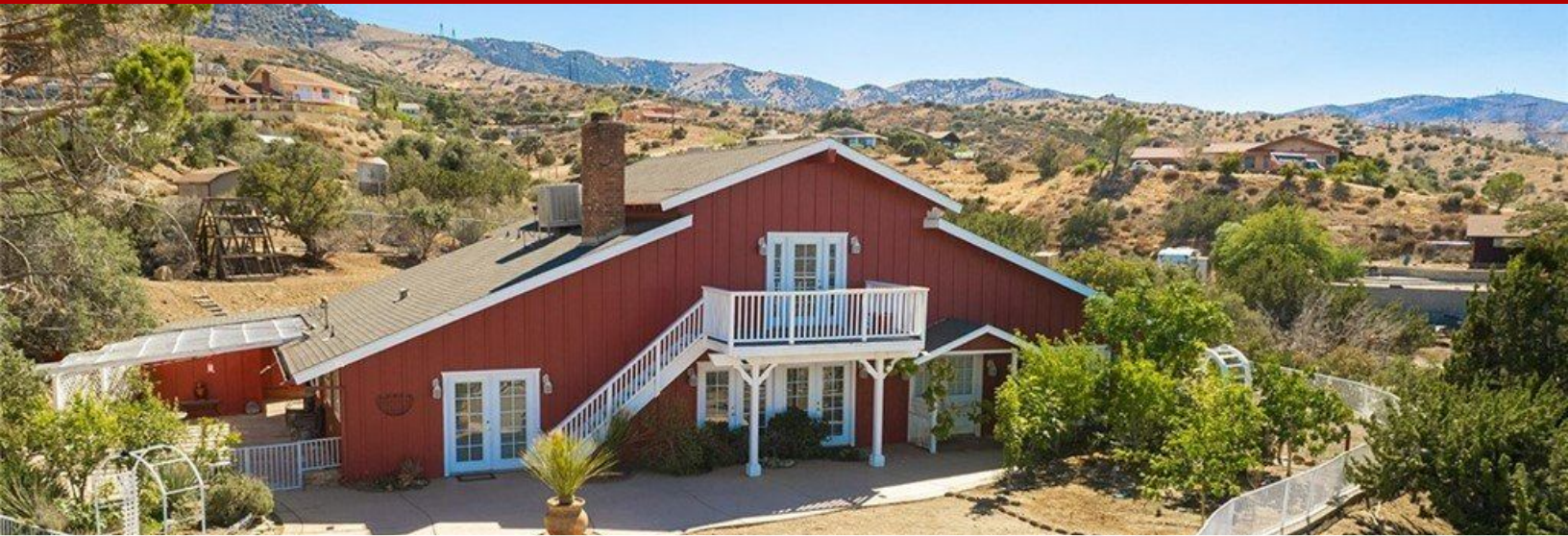


# Single Family Residence, Ranch - Palmdale, CA



**36539 Camares Drive, Palmdale, CA, 93551**

Offered at \$810,000

When you wake up and before bed, marvel at the views from the Master Suite on 2nd level with balcony. There is enough space on 2nd level to complete it as a one or two bedroom apartment with private entrance. The first level has 3 great sized bedrooms and two full bathrooms. There is an open eat-in kitchen with indoor BBQ, dual side fireplace and a wood burning stove that can be used as a main heat source. The living room is adjacent to the kitchen that opens to the front of the home looking out to views of the city and Lake Palmdale. The other end of home has very large multi-purpose room that is flooded with light and connects to an enclosed part of the yard. From here you can see out to the barn and enclosed space for horses and other animals. There are two goats living there now. Fill the chicken coop with hens and start collecting eggs in the morning for your specialty omelettes! The property has solar panels installed on southeast end, automatic gates to enter the round about driveway, electric ceiling heat, 2 swamp coolers on roof and many fruit and nut trees including peaches, apples, pear, avocado, figs, grapes, almonds and pistachios. Contact Danielle 714-423-9124

4 Bedrooms

3 Bathrooms

2,688 sqft

1.25 acres (lot size)

Built: 1963



Scan above on mobile device  
for directions to this listing

Assist2Sell ESJ Properties

(661) 794-2021

Henry@Assist2Sell.com

Assist2Sell.

All information deemed reliable but not guaranteed. If your property is currently listed this is not meant as a solicitation.

©2026 Assist2Sell.com - Licensed according to agreed upon terms and conditions. This listing is courtesy of eXp Realty of California, Inc.



<https://assist2sell.com/listing/36539-camares-drive-palmdale-ca-93551/3yd-mrmlsca-oc22152868>