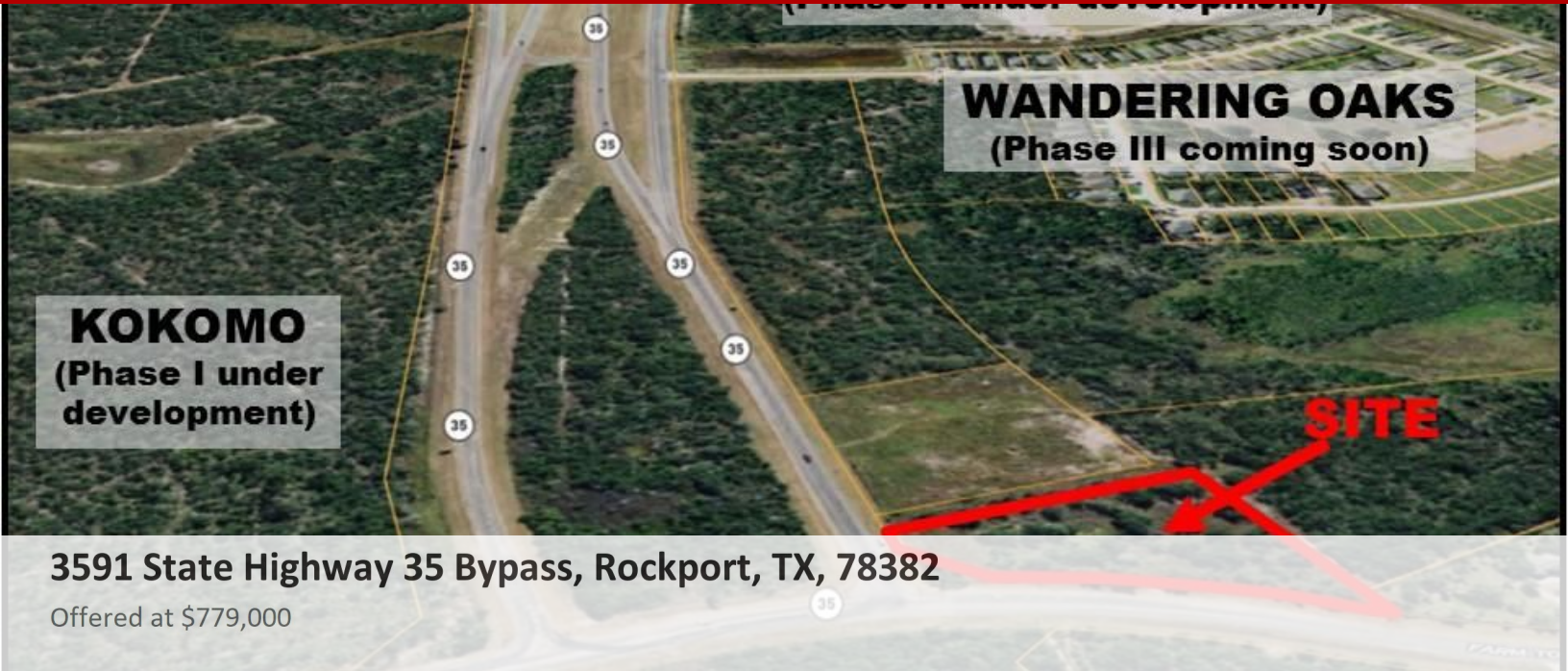


Commercial Lot - ROCKPORT, TX

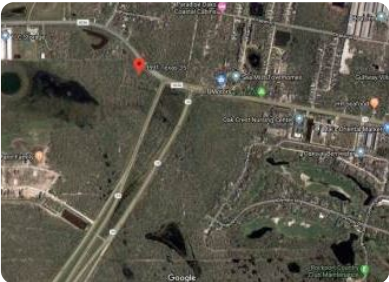
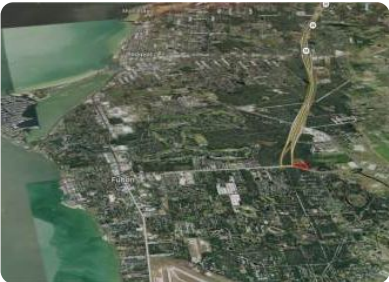


3591 State Highway 35 Bypass, Rockport, TX, 78382

Offered at \$779,000

Hard corner fronting two major corridors, 35 Bypass and FM 3036. Ideal for retail, QSR, mixed use, or convenience store development. Existing curb cut on the Bypass with 30 foot wide concrete driveway. Zoned B1, General Business District. More than 615 feet of frontage on FM 3036 and 45+/- feet on the Bypass. On the southbound side of the Bypass to capture "go home" traffic toward Aransas Pass, Portland, Gregory, Ingleside, Corpus Christi, Sinton, etc. Utility availability to be verified by buyer.

0 Bedrooms
0 Bathrooms
Unknown sqft sqft
Built: Unknown year



Scan above on mobile device
for directions to this listing

Assist2Sell
vip@assist2sell.com

Assist2Sell

All information deemed reliable but not guaranteed. If your property is currently listed this is not meant as a solicitation.
©2025 Assist2Sell.com - Licensed according to agreed upon terms and conditions. This listing is courtesy of Evtex Companies

