





Townhouse, Attached Single Family - Aurora, CO

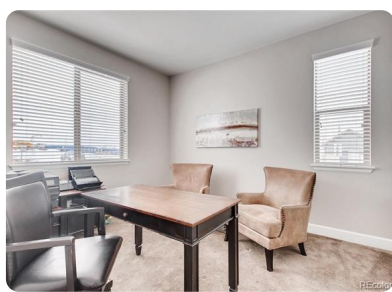
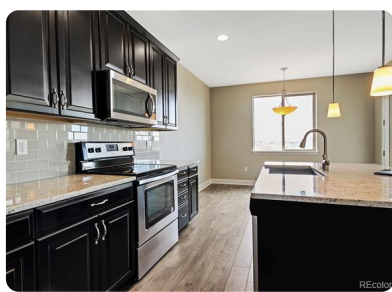
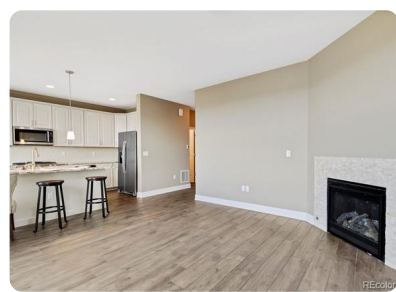


3569 South Lisbon Court, Aurora, CO, 80013

Offered at \$407,107

Brand new, move in ready townhome with incredible mountain views! Spruce model at Painted Ridge Townhomes features 3 bedrooms and 3 bathrooms. Master Suite contains 5 piece attached bathroom and walk in closet, with ceiling fans installed in some bedrooms. Open floor plan on main level features Living Room with fireplace, spacious Kitchen w/ stainless appliances, granite island and counters, and a Dining Room. Upper laundry room! Walk out basement can easily be finished w/ addl bedroom, bathroom and rec room. Covered deck w/ breathtaking mountain views. Attached garage! Low HOA includes snow removal, trash removal, landscaping, exterior maintenance including roof! In nationally recognized Cherry Creek School District. Close to DIA airport, E-470, shopping, schools, parks. Brand new construction -- be the first to live in this unit! This is a new build community, photos in the MLS listing are not necessarily of this particular unit, but all photos are of units in this community.

	3 Bedrooms
	3 Bathrooms
	2,412 sqft
	Built: 2019



Scan above on mobile device
for directions to this listing

Assist2Sell Value Advantage Realty
(303) 346-0959
lrowe@assist2sell.com

Assist2Sell

All information deemed reliable but not guaranteed. If your property is currently listed this is not meant as a solicitation.
©2019 Assist2Sell.com - Licensed according to agreed upon terms and conditions. This listing is courtesy of Douglas Partners LLC



<https://assist2sell.com/listing/3569-south-lisbon-court-aurora-co-80013/3yd-metrolist-1753363>