

# Townhouse, Attached Single Family - Aurora, CO

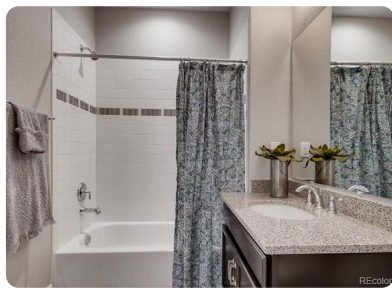
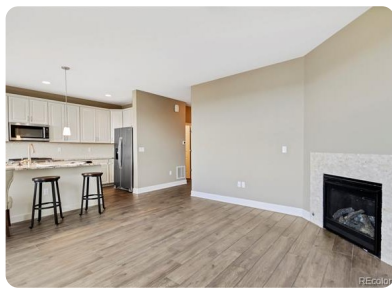


## 3554 South Lisbon Court, Aurora, CO, 80013

Offered at \$370,839

Brand new build townhome! Spruce model at Painted Ridge Townhomes features 3 bedrooms and 3 bathrooms. Master Suite contains 5 piece attached bathroom and walk in closet, as well as a ceiling fan. Open floor plan on main level features Living Room, spacious Kitchen w/ eating area, granite island and counters, and a Dining Room. Upper laundry room! Large basement can easily be finished w/ addl bedroom, bathroom and rec room. Attached garage! Low HOA includes snow removal, trash removal, landscaping, exterior maintenance including roof! In nationally recognized Cherry Creek School District. Close to DIA airport, E-470, shopping, schools, parks. Brand new construction -- be the first to live in this unit! This is a new build community, photos in the MLS listing are not necessarily of this particular unit, but all photos are of units in this community.

 3 Bedrooms
 3 Bathrooms
 2,412 sqft
 Built: 2019



Scan above on mobile device  
for directions to this listing

Assist2Sell Piele Realty, LLC  
(303) 755-1635  
cpiele@webuysellcolorado.com

Assist2Sell

All information deemed reliable but not guaranteed. If your property is currently listed this is not meant as a solicitation.  
©2019 Assist2Sell.com - Licensed according to agreed upon terms and conditions. This listing is courtesy of Douglas Partners LLC



<https://assist2sell.com/listing/3554-south-lisbon-court-aurora-co-80013/3yd-metrolist-7360353>