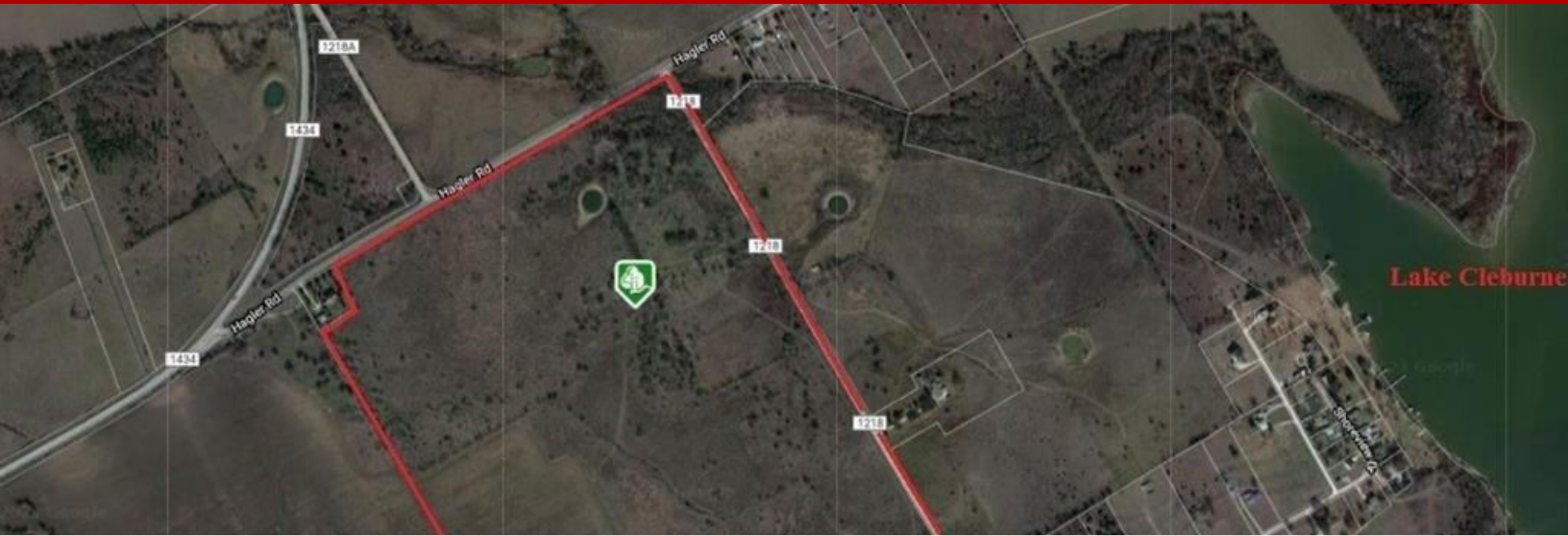


Ranch - Cleburne, TX

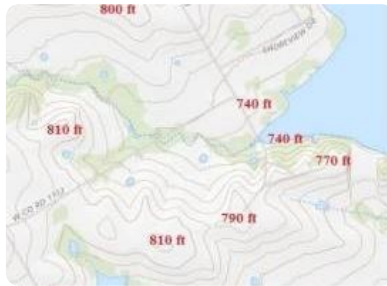


3501 County Road 1112 Road, Cleburne, TX, 76033

Offered at \$3,279,000

Attention Residential and Commercial Developers. This 131-acre parcel is conveniently located at a corner of two streets. Its 4,646 feet of road frontage and proximity to hospital (5 minutes), hotels (6 minutes), and shopping (Walmart 7 minutes) make it ideal for development. Other advantages include easy access to Chisholm Trail Pkwy and Lake Pat Cleburne just a short distance down the street. While developing your business plan, enjoy the lucrative income from the leased land to farmers who grow organic crops.

0 Bedrooms
0 Bathrooms
Unknown sqft sqft
131.16 acre (lot size)
Built: Unknown year



Scan above on mobile device
for directions to this listing

Assist2Sell
vip@assist2sell.com

Assist2Sell.

All information deemed reliable but not guaranteed. If your property is currently listed this is not meant as a solicitation.
©2026 Assist2Sell.com - Licensed according to agreed upon terms and conditions. This listing is courtesy of Ready Real Estate, LLC



<https://assist2sell.com/listing/3501-county-road-1112-road-cleburne-tx-76033/3yd-ntreis-14565226>