

Condo - Brooklyn, NY



3435 Guider Avenue 5A, Brooklyn, NY, 11235

Offered at \$879,000

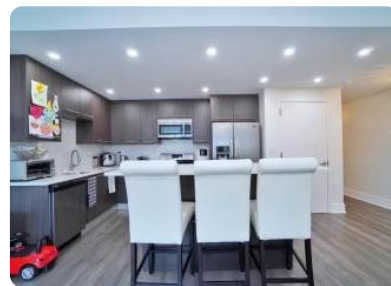
Welcome to The Gateway Condominium!!!! Boasting an array of sleek finishes and a thoughtful open plan layout, this immaculate 3-bedroom, 2-bathroom condo is a paradigm of contemporary Brooklyn living. Features of this 1200 sq. ft. home include wide plank engineered hardwood floors, huge windows, central heating and cooling, a convenient washer/dryer hook-up, designer baths, and two terraces. Beyond a functional entryway space the home flows into a luminous, open-concept living, dining, and kitchen area. The galley-style kitchen is equipped with veneer European cabinetry, Ceaser Stone countertops, Spanish tile backsplash, and Premium appliances. Developed by Rybak Development, this young, all concrete building, features Fitness Center and parking garage. Very conveniently located between three desirable neighborhoods: Sheepshead Bay, Manhattan Beach, and Brighton Beach. Short distance to the Beach and Historic Boardwalk, Emmons Ave promenade with all the entertainment, beautiful Manhattan Beach, B and Q train (either Brighton station or Sheepshead bay), buses, Highway, houses of worships.

3 Bedrooms

2 Bathrooms

1,200 sqft

Built: 2013



Scan above on mobile device
for directions to this listing

Assist2Sell
vip@assist2sell.com

Assist2Sell

All information deemed reliable but not guaranteed. If your property is currently listed this is not meant as a solicitation.
©2026 Assist2Sell.com - Licensed according to agreed upon terms and conditions. This listing is courtesy of RE/MAX Edge



<https://assist2sell.com/listing/3435-guider-avenue-5a-brooklyn-ny-11235/3yd-bmlsny-466288>