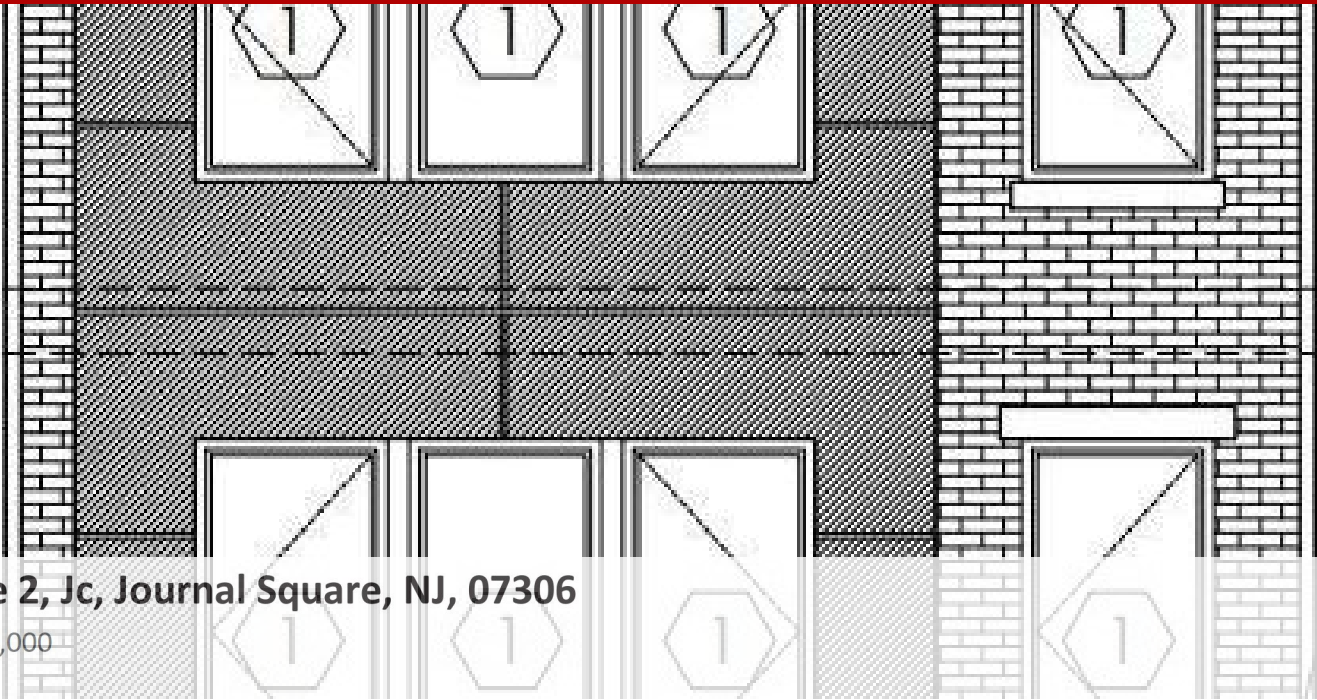


Condominium, Multi-level - JC, Journal Square, NJ

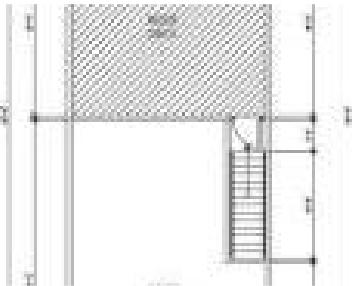
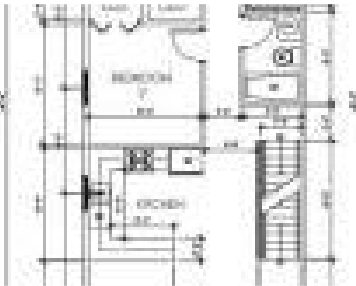


338 Sip Ave 2, Jc, Journal Square, NJ, 07306

Offered at \$799,000

New Construction in Journal Square! Welcome to 338 Sip Ave. This condo unit offers a refined luxury home, just 8 minutes walking distance to the Journal Square PATH. These units will feature defined modern finishes. The unit consists of a 3 Bedroom, 2 bath duplex home that boasts a private entrance, 1 garage parking, two private terraces and large rooftop deck. The design of the layouts are open space conceptual featuring a ton of passive lighting. The kitchen features a center island, shaker style cabinets, quartz counters, and stainless steel appliances. The condo unit is currently being built and the developer will BUILD TO SUIT the buyers. The home will have modern living conveniences including central air and gas heat, full size vented washer / gas dryer, intercom system, all rooms pre-wired for cable, ample closet storage with built-in shelving, recessed LED lighting and solid oak hardwood floors. The second floor unit will feature a living level that is accessible to a large private rooftop deck for family and friends to enjoy. Walking distance to PATH, restaurants, coffee shops, nightlife, convenient shopping and quick NYC access.

3 Bedrooms
2 Bathrooms
4,260 sqft
Built: Unknown year



Scan above on mobile device
for directions to this listing

Assist2Sell
vip@assist2sell.com



All information deemed reliable but not guaranteed. If your property is currently listed this is not meant as a solicitation.
©2026 Assist2Sell.com - Licensed according to agreed upon terms and conditions. This listing is courtesy of Michael Cervelli Real Estate

