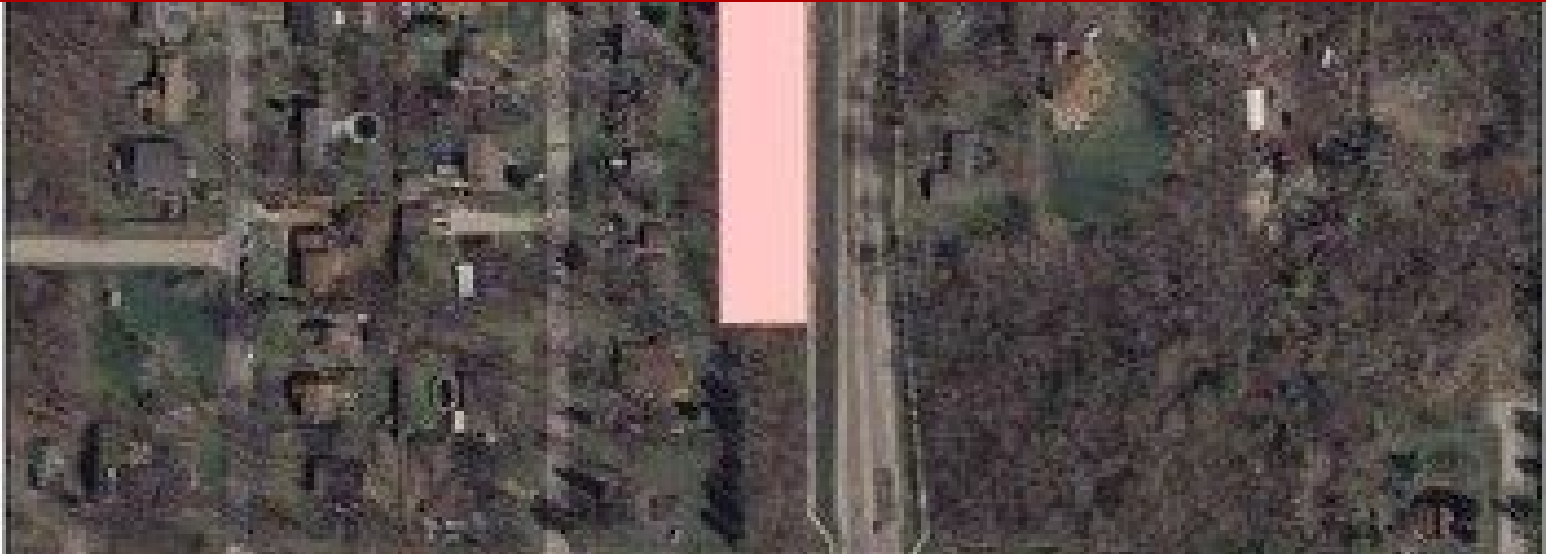


Land - Park City, IL



33564 Greenleaf Street, Park City, IL, 60085

Offered at \$125,000

Great opportunity: Rectangular corner parcel with 364' on Greenleaf at the SW corner of Greenleaf and Lake Park, priced to sell!! Zoned commercial, all utilities available and no mapped wetlands or floodplain. Many possibilities for development. Excellent location with high visibility, good traffic counts, and easy access. Buy and hold for investment or to build on right away! Lots of road frontage for good visibility in an expanding commercial area.

0 Bedrooms
0 Bathrooms
Unknown sqft sqft
0.8 acre (lot size)
Built: Unknown year

Assist2Sell

No other photos
Available

Assist2Sell

No other photos
Available

Assist2Sell

No other photos
Available

Assist2Sell

No other photos
Available



Scan above on mobile device
for directions to this listing

Assist2Sell
vip@assist2sell.com

Assist2Sell

All information deemed reliable but not guaranteed. If your property is currently listed this is not meant as a solicitation.
©2026 Assist2Sell.com - Licensed according to agreed upon terms and conditions. This listing is courtesy of RE/MAX Showcase

