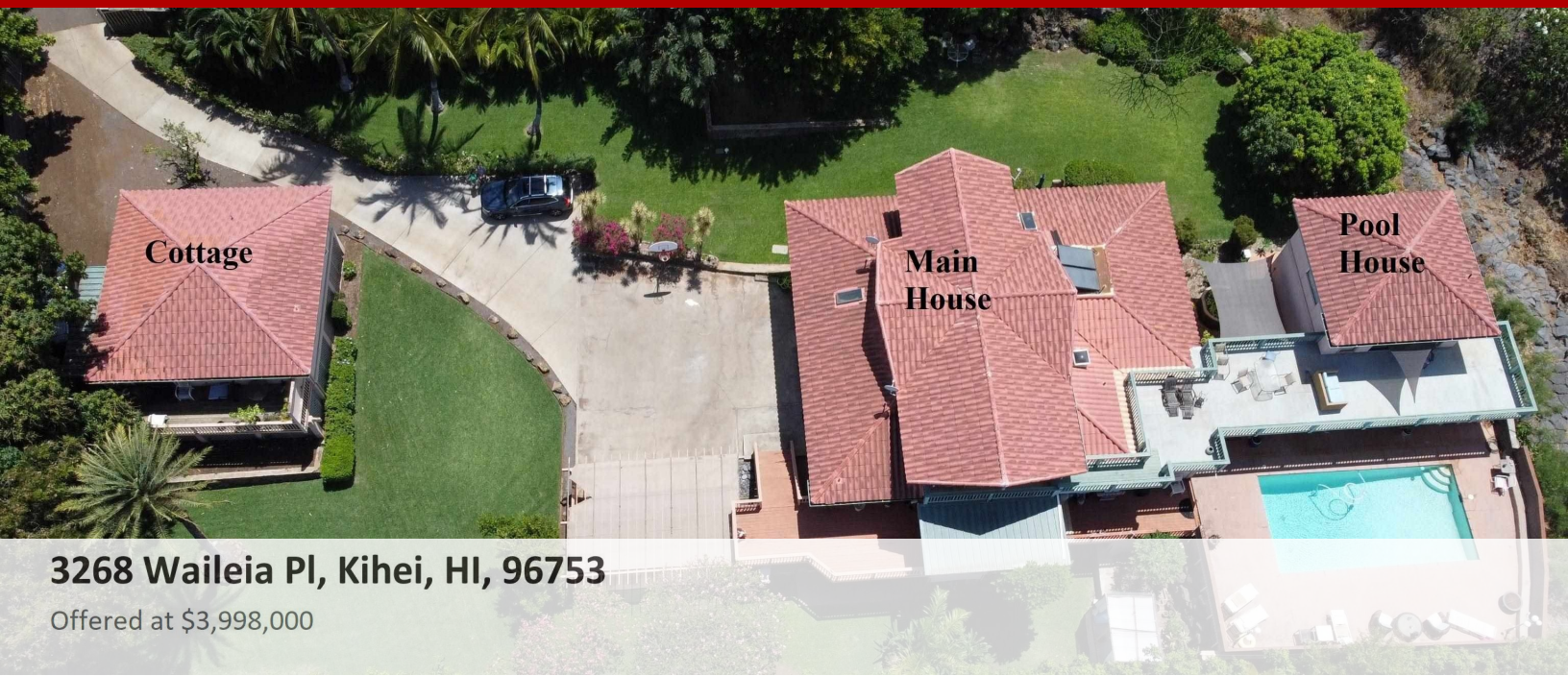


SF w/Det Ohana or Cottage - Kihei, HI



3268 Waileia Pl, Kihei, HI, 96753

Offered at \$3,998,000

Offering incredible privacy on a landscaped and manicured and double-sized (34,935 square feet, or 0.8 acres) cul-de-sac lot! This Mediterranean-style home in Maui Meadows provides top-floor sunset views, a large pool, and a versatile living space. The primary home boasts a fabulous floor plan with a bright, open-concept living space, 24 foot vaulted wood beam ceilings, and extras like a yoga/office loft and finished basement (perfect for overflow). The beautiful outdoor surroundings include a sizable lanai and a lovely yard with mature fruit trees. Designed perfectly for a large family, or investment property. The roomy garage has plenty of built-in storage space and there is additional covered parking for your family and guests. The main house and property features 4 spacious bedrooms with en suite baths, a yoga/office loft, a bed, bath + storage/den in the basement, and the detached 2BR/1BA cottage and a 1BR/1.5BA pool house are divided into three self-contained living spaces which affords flexible utilization and harmonic coexistence even when fully occupied. See Floor Plans (generated by Matterport VT) Enjoy the true spirit of island living by making this your new island home.

6 Bedrooms

8 Bathrooms

6,225 sqft

0.8 acre (lot size)

Built: 1977



Scan above on mobile device
for directions to this listing

Assist2Sell
vip@assist2sell.com

Assist2Sell.

All information deemed reliable but not guaranteed. If your property is currently listed this is not meant as a solicitation.

©2025 Assist2Sell.com - Licensed according to agreed upon terms and conditions. This listing is courtesy of Hawaii Life Real Estate Brokers



<https://assist2sell.com/listing/3268-waileia-pl-kihei-hi-96753/3yd-ramhi-396643>