






RES-Single Family, Traditional - Little Elm, TX

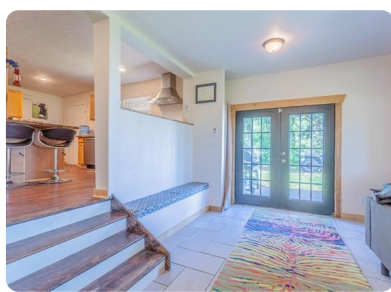


3091 Spring Branch Drive, Little Elm, TX, 75068

Offered at \$289,000

Enjoy lakefront living from this beautiful home on a landscaped lot. An updated farmhouse feel home with elegant interior that is accentuated by windows, decorative lights, and ceiling fans throughout the home. The living room is perfect for entertainment with sweeping views of Lake Lewisville. The kitchen has built-ins and ample butcher block counter space. Second story bedroom has on suite bathroom, large closet and attached porch with wall to wall windows to enjoy the view in quiet solitude. A huge backyard with fenced yard Just minutes away from Little Elm Beach boat launch, the home's direct lake access from the back yard is a gentle slope into the water, allowing easy access for everyone in the family.

 3 Bedrooms
 2 Bathrooms
 1,775 sqft
 0.5 acre (lot size)
 Built: 1977



Scan above on mobile device
for directions to this listing

Assist2Sell
info@assist2sell.com

Assist2Sell

All information deemed reliable but not guaranteed. If your property is currently listed this is not meant as a solicitation.
©2019 Assist2Sell.com - Licensed according to agreed upon terms and conditions. This listing is courtesy of Josh DeShong Real Estate



<https://assist2sell.com/listing/3091-spring-branch-drive-little-elm-tx-75068/3yd-ntreis-14116079>