


LND-Commercial - Whitewright, TX

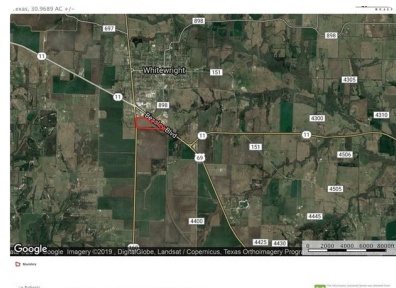


301 S US Highway 69, Whitewright, TX, 75491

Offered at \$829,000

Outstanding investment opportunity in fast growing north Texas. This 30.9689 acre tract currently zoned C-2 has frontage on two highways and abuts established commercial and multi-family properties. 2016 TXDOT traffic counts indicate 5530 vehicles on HWY 69 approaching Whitewright and 6975 vehicles on HWY 69 just west of property frontage. Traffic counts on State Highway 160 at property frontage were 4139 vehicles in 2016. Tremendous growth to the south as State Highway 121 from Melissa to State Highway 160 is being expanded to four lanes. Future plans call for expansion of US HWY 69. Recent new builds in Whitewright include new apartment complex across Hwy 69, new O'Reillys Auto Parts, new Sonic and more.

	0 Bedrooms
	0 Bathrooms
	Unknown sqft sqft
	30.97 acre (lot size)
	Built: Unknown year



Scan above on mobile device
for directions to this listing

Assist2Sell
info@assist2sell.com

Assist  Sell.

All information deemed reliable but not guaranteed. If your property is currently listed this is not meant as a solicitation.
©2019 Assist2Sell.com - Licensed according to agreed upon terms and conditions. This listing is courtesy of Bois D'arc Realty, Inc



<https://assist2sell.com/listing/301-s-us-highway-69-whitewright-tx-75491/3yd-ntreis-14184323>