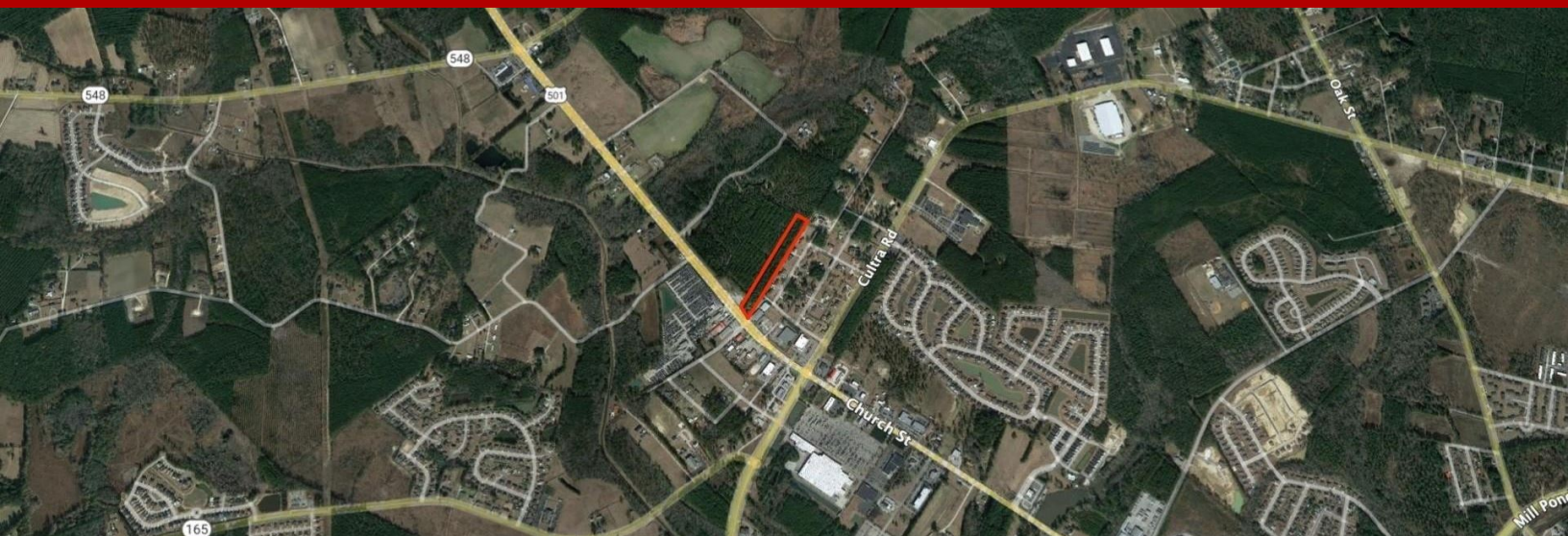


# Commercial Lot - Sale - Conway, SC



## 2964 Highway 501 W, Conway, SC, 29526

Offered at \$749,900

OFFERED FOR SALE: Approximately 3.57 Acres with Approximately +/- 106' of frontage on US Highway 501 in Conway, SC. This location is ideal for a future commercial development. Easily accessible via US-501, US-701 and US-378. Approximately 3.57 Acres. Located Outside the City Limits of Conway, SC. Approximately +/- 106' Frontage on US-501. Approximately +/- 1,470' Depth. Tract A Identified as TMS#1220003010 and PIN# 33703010014, County of Horry, SC. Tract B Identified as TMS# 1220003062 and PIN# 32614040009, County of Horry, SC. Average Daily Traffic Count: 20,000 (Source: SCDOT 2019). Approx. 1,398SF Residential Building on Tract A. Underground Utilities. Curb Cut on Highway 501 Provides Access for Westbound Traffic. Additional Ingress/Egress from Mercedes Drive.

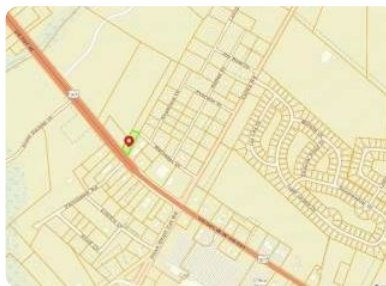
0 Bedrooms

0 Bathrooms

Unknown sqft sqft

3.63 acre (lot size)

Built: Unknown year



Scan above on mobile device  
for directions to this listing

Assist2Sell  
vip@assist2sell.com

Assist2Sell

All information deemed reliable but not guaranteed. If your property is currently listed this is not meant as a solicitation.  
©2026 Assist2Sell.com - Licensed according to agreed upon terms and conditions. This listing is courtesy of Keystone Realty MB, LLC.



<https://assist2sell.com/listing/2964-highway-501-w-conway-sc-29526/3yd-ccarsc-2211197>