





# Land - Moore, OK

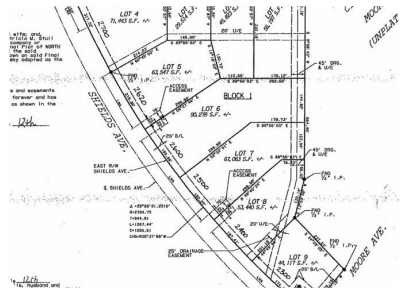


## 2600 N Shields Boulevard, Moore, OK, 73160

Offered at \$314,900

This is the place for your business and a great investment! This is a highly populated area with high traffic volumes just a couple of blocks from I35 on the north side of Moore. Moore is rapidly growing in population and business! This land is zoned I1 light industrial. This land can be rezoned to C3 commercial depending on the circumstances. Will be perfect for a storefront, office space, warehouse or any other use! Traffic can easily see and access this lot from north and south I35 traffic, Shields blvd and SW 27th ST. I35 has over 100k + daily traffic count, SW 27th ST has 15k + and Shields has 17k +. We are selling 4 total lots that are available. These lots are great candidates for businesses such as warehouses, construction sales, repair services, custom manufacturing, storage units, gas stations, office space, hotels etc.

 0 Bedrooms
 0 Bathrooms
 Unknown sqft sqft
 Built: Unknown year



Scan above on mobile device  
for directions to this listing

Assist2Sell  
info@assist2sell.com

Assist2Sell

All information deemed reliable but not guaranteed. If your property is currently listed this is not meant as a solicitation.  
©2019 Assist2Sell.com - Licensed according to agreed upon terms and conditions. This listing is courtesy of Rose Rock Realty



<https://assist2sell.com/listing/2600-n-shields-boulevard-moore-ok-73160/3yd-ocmarok-834707>