

For sale

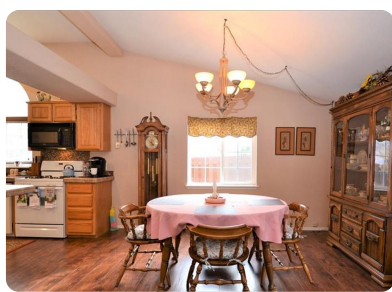


2507 NE Wintergreen Dr, Bend, OR, 97701

Offered at \$329,900

Tucked away in one of Bend's private gated community you will find this incredibly spacious 1,872 +/- sq ft home on a .13 of acre lot with all of the amenities. The home highlights tall ceiling and a very open and comfortable living room. There are 2 dining areas that surround the kitchen and the large picture windows fill the kitchen with plenty of nature light. The kitchen boasts a pantry, tile counters and a breakfast bar. The master suite is complete with walk-in closet, double vanity, soaking tub and separate shower. There are 2 guest bedrooms with laminate flooring and a guest bath close by. Outside there is a covered back deck and paver patio. There is natural gas forced air and AC for optimal comfort year round, an attached 2 car garage and more!. Mountain View Park features a community pickle ball court with basketball hoop, pool, gated RV storage and includes front yard landscaping. Close to medical and shopping. *There is no age restriction for this community.

| |
|----------------------|
| 3 Bedrooms |
| 2 Bathrooms |
| 1,872 sqft |
| 0.13 acre (lot size) |
| Built: 1997 |



Scan above on mobile device for directions to this listing

Assist2Sell Buyers and Sellers Realty Services
Jordan Ries
(541) 388-2111
jries@assist2sell.com



All information deemed reliable but not guaranteed. If your property is currently listed this is not meant as a solicitation.
©2020 Assist2Sell.com - Licensed according to agreed upon terms and conditions.

