

Single Family Detached - Port Saint Lucie, FL



2392 SW Caballero Street SW, Port Saint Lucie, FL, 34953

Offered at \$450,000

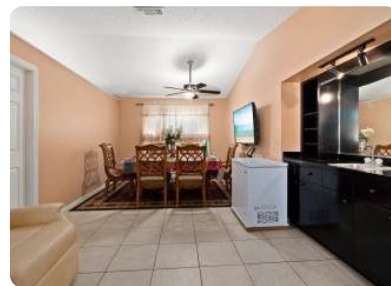
Located in the desirable Gatlin area of PSL on a beautiful treed lot, minutes to all shopping and 1 mile from I-95, this home is an absolute must see. Enjoy privacy on your oversized porch. Simply relax in nature in your fully fenced back yard! CBS construction. All tile floors and spacious bedrooms with a large open kitchen, a wet bar for entertaining and a wood-burning fireplace! 3 rooms with walk-in closets and a double-car garage. Light and bright with vaulted ceilings and skylights.

4 Bedrooms

2 Bathrooms

1,980 sqft

Built: 1990



Scan above on mobile device
for directions to this listing

Assist2Sell Plaza Realty Group
(772) 335-0016
dbarile@assist2sell.com

Assist2Sell

All information deemed reliable but not guaranteed. If your property is currently listed this is not meant as a solicitation.
©2025 Assist2Sell.com - Licensed according to agreed upon terms and conditions. This listing is courtesy of rog engage



<https://assist2sell.com/listing/2392-sw-caballero-street-sw-port-saint-lucie-fl-34953/3yd-rmlsfl-rx-10843904>