






Traditional, Single-Family - Richmond, TX

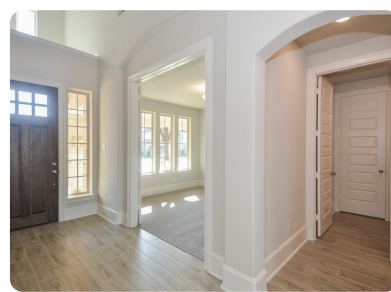
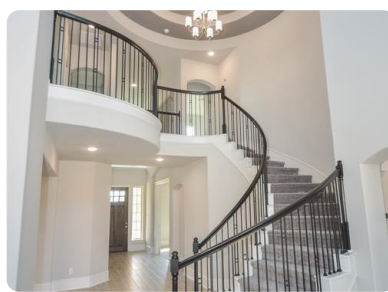


23310 McCloy Canyon Drive, Richmond, TX, 77469

Offered at \$403,145

Westin Homes NEW Construction (Preston III, Elevation P) Two Story. 4 bedrooms, 3.5 baths. Formal Living and Dining Rooms. Private Master Suite downstairs. Game Room and Media Room upstairs. 2 car garage. Spanning nearly 600 acres of beautiful homes, lush landscaping, trails, and exciting amenities, Veranda embodies the legacy of historic Richmond with all the comforts of a luxurious master-planned community. Minutes to the newly expanded I-69 and the Grand Parkway, you are near exceptional shopping, dining and recreation. Stop by the Westin Homes model home today to find out more about Veranda!

 4 Bedrooms
 4 Bathrooms
 3,471 sqft
 0.18 acres (lot size)
 Built: 2019



Scan above on mobile device
for directions to this listing

Assist2Sell
info@assist2sell.com

Assist  Sell.

All information deemed reliable but not guaranteed. If your property is currently listed this is not meant as a solicitation.
©2020 Assist2Sell.com - Licensed according to agreed upon terms and conditions. This listing is courtesy of Westin Homes



<https://assist2sell.com/listing/23310-mccloy-canyon-drive-richmond-tx-77469/3yd-harmlstx-87080265>