

Commercial - Ypsilanti, MI

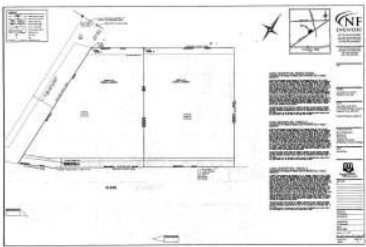


2324 W Michigan Avenue, Ypsilanti, MI, 48197

Offered at \$1,595,000

Prime SPLITTABLE 3 acres right at I-94 & Michigan Ave! SO MUCH POTENTIAL! Property is zoned B3 with high traffic! Right next door to Bank of America and across street from Wendys/Tim Hortons and super easy on/ easy off to I-94. Currently use is residence w/several outbuildings, but has been used as a rental in the past. Plans exist to erect an auto repair facility with several bays, Office Space, and a coffee shop. So much potential in this prime piece of High Traffic Real Estate! Perfect for a Hotel, Fast Food Chain, or Strip Mall! 2 Egress and Ingress Access Points. Also available as two 2.02 acre lots. See MLS # 3259912 & 3259916

0 Bedrooms
0 Bathrooms
Unknown sqft sqft
3 acre (lot size)
Built: 1860



Scan above on mobile device
for directions to this listing

Assist2Sell
vip@assist2sell.com



All information deemed reliable but not guaranteed. If your property is currently listed this is not meant as a solicitation.
©2026 Assist2Sell.com - Licensed according to agreed upon terms and conditions. This listing is courtesy of Resource Realty Group

