






Single Family - Eagle, ID

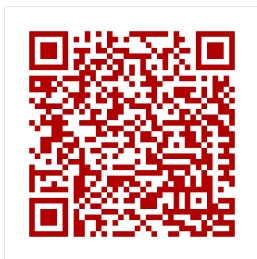
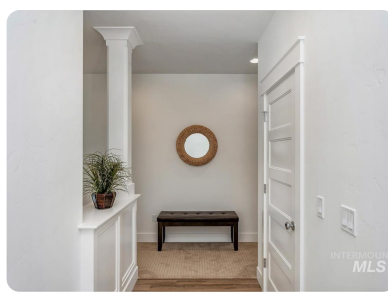
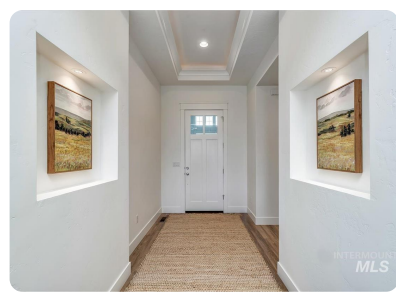


2251 Fountainhead Way, Eagle, ID, 83616

Offered at \$539,900

The popular "Hallmark Plan" with Cape Cod Elevation features beautiful courtyard, spacious rooms including huge 4th bedroom/bonus room/guest quarters. Stunning great room area with beautiful fireplace, huge granite island in gorgeous kitchen, large laundry room with window and sink, tech center, great master suite with access to large covered patio. Tons of quality throughout.

 4 Bedrooms
 3 Bathrooms
 2,656 sqft
 0.31 acre (lot size)
 Built: 2020



Scan above on mobile device
for directions to this listing

Assist2Sell Buyers & Sellers Realty
(208) 887-7800
office@assist2sellboise.com

Assist2Sell.

All information deemed reliable but not guaranteed. If your property is currently listed this is not meant as a solicitation.
©2020 Assist2Sell.com - Licensed according to agreed upon terms and conditions. This listing is courtesy of Realty One Centre of Boise Inc.



<https://assist2sell.com/listing/2251-fountainhead-way-eagle-id-83616/3yd-imlsid-98754258>