

Auto Service Garage - Springdale, AR



2105 S Thompson St, Springdale, AR, 72764

Offered at \$960,000

PRIME COMMERCIAL PROPERTY -Many opportunities for this Hwy 71-B frontage property that has a traffic count of over 20,000 vehicles per day. This commercial building sits on .67+/- acres with approximately 121' of frontage on S Thompson Street. Includes approx 1,000 sq-ft of office space, 2,750 sq-ft of shop space, 5 garage doors(3-12x12 and 2-7x7), and a total of 2 bathrooms. This is a fantastic opportunity to own a commercial zoned building in the heart of Springdale. Close proximity to Walmart Supercenter, Walgreens, CVS, Aldi, Wendy's, and others.

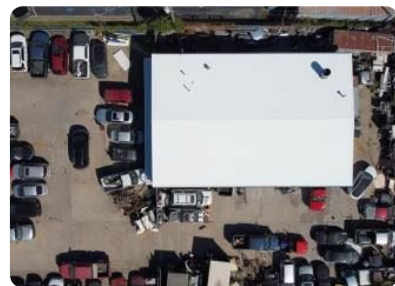
0 Bedrooms

0 Bathrooms

3,750 sqft

0.67 acre (lot size)

Built: 1992



Scan above on mobile device
for directions to this listing

Assist2Sell
vip@assist2sell.com

Assist2Sell.

All information deemed reliable but not guaranteed. If your property is currently listed this is not meant as a solicitation.
©2025 Assist2Sell.com - Licensed according to agreed upon terms and conditions. This listing is courtesy of Lindsey & Associates, Inc



<https://assist2sell.com/listing/2105-s-thompson-st-springdale-ar-72764/3yd-armlsar-1209574>