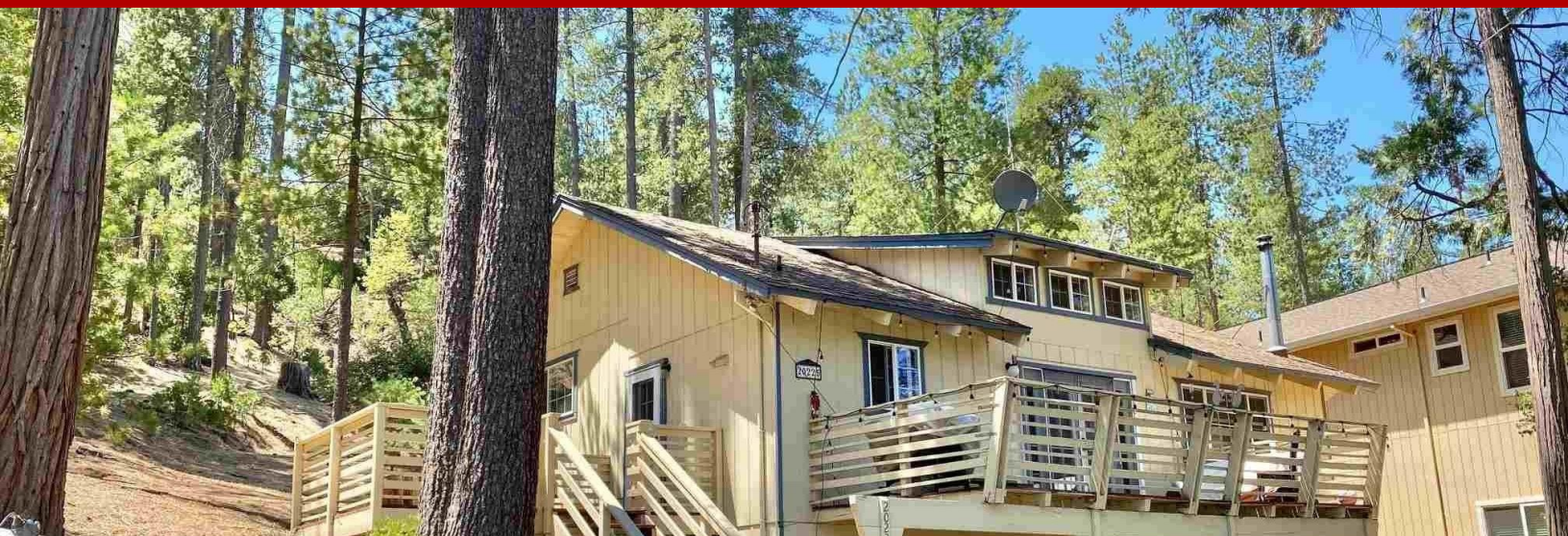


Cabin/Rustic, Single Family - Groveland, CA



20225 Upper Skyridge Drive 1539, Groveland, CA, 95321

Offered at \$435,000

Retreat to the Mountains!! You will love this mountain getaway on just under 1/2 acre of land situated in a serene setting. Enjoy treed views from the living areas and deck of this charming cabin. Spend cool winter evenings relaxing by the wood-burning stove in the great room. Tall wood and beam ceilings contribute to the feeling of extra space in this already roomy design. An open kitchen features a friendly breakfast bar for a quick meal, coffee or a cup of tea. Two steps up takes you to the primary and guest bedrooms. The primary bedroom has a separate half bath and an additional full bath is located in the hallway midway between primary and second bedrooms. Upon entering the lower "ground level" area, you will find a bonus/ game room--just waiting for your own personal touch--plus a 3rd bedroom, full bath & laundry area. There's plenty of indoor storage "secreted away" and accessed through the 3rd bedroom. Central heating and air, ceiling fans and white dual pane, vinyl clad windows all contribute to year round comfort and energy efficiency. Most furnishings would stay for the new owner. Located in beautiful Pine Mountain Lake, a popular gated community just 23 miles from Yosemite National Park. Enjoy hiking, tennis, pickleball, the equestrian center, semi-private 18 hole golf course, private lake for boating, fishing, swimming, airport and so much more--all in your own neighborhood! Come for a Visit and Stay for a Lifetime!!

3 Bedrooms

3 Bathrooms

1,640 sqft

0.48 acre (lot size)

Built: 1975



Scan above on mobile device
for directions to this listing

Assist2Sell
vip@assist2sell.com

Assist2Sell

All information deemed reliable but not guaranteed. If your property is currently listed this is not meant as a solicitation.

©2025 Assist2Sell.com - Licensed according to agreed upon terms and conditions. This listing is courtesy of PINE MOUNTAIN LAKE REALTY



<https://assist2sell.com/listing/20225-upper-skyridge-drive-1539-groveland-ca-95321/3yd-tcarca-20221950>