

Traditional, Single-Family - Spring, TX

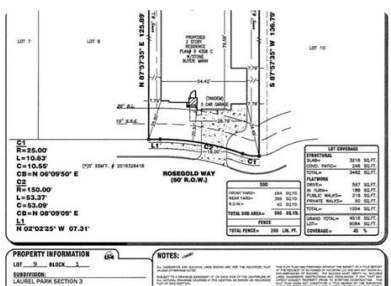


20106 Rosegold Way, Spring, TX, 77379

Offered at \$404,990

Our Cape May plan has won recent industry awards for its architectural design. This amazing plan features 4 bedrooms, 4.5 baths, and a 4-car garage. A huge volume ceiling graces both the kitchen and the family room, as well as the study. Incredible overlooks from the 2nd floor of this spacious, open design. Large windows across the entire back of the home provide great light. We thought so much of this breathtaking floor plan that we made it our Model Home in Laurel Park. The home features a stone and brick exterior with a front porch and tasteful cedar-wrapped columns. This is one of 6 remaining available M/I Homes in fast-selling Laurel Park. Come and see this home before it's gone.

	4 Bedrooms
	5 Bathrooms
	3,400 sqft
	0.21 acres (lot size)
	Built: 2019



Scan above on mobile device for directions to this listing

Assist2Sell Results Realty
 (713) 823-1848
 a2sell@aol.com



All information deemed reliable but not guaranteed. If your property is currently listed this is not meant as a solicitation.
 ©2020 Assist2Sell.com - Licensed according to agreed upon terms and conditions. This listing is courtesy of M/I Homes

