

Condominium - SAN FRANCISCO, CA



201 Folsom St 24G, San Francisco, CA, 94105

Offered at \$2,195,000

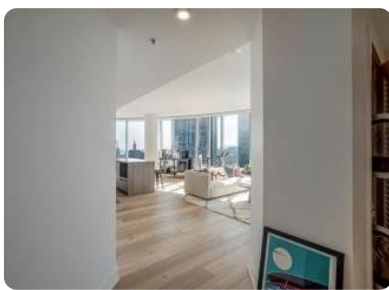
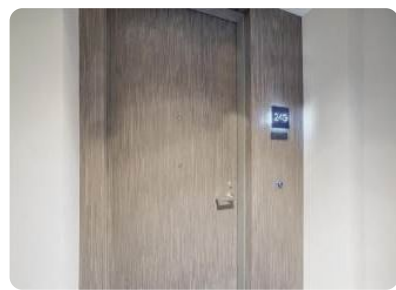
The most sought for corner unit and floor plan in Lumina tower building! Lumina is the best full concierge service and amenities communities in the west coast. Landmark residential building at San Francisco sky-rim. 24G in tower B is southwest facing get warm sunlight most of the day. Floor to ceiling curve windows capture to both incredible water view and city view. Best 2b/2b floor plan with tons storage space. Luxury touch of European cabinet and stainless steel appliance. Minutes to the bay and Ferry building retails and restaurants. Must not miss the chic life here by the SF bay!

2 Bedrooms

2 Bathrooms

1,401 sqft

Built: 2016



Scan above on mobile device
for directions to this listing

Assist2Sell
vip@assist2sell.com

Assist²Sell.

All information deemed reliable but not guaranteed. If your property is currently listed this is not meant as a solicitation.
©2025 Assist2Sell.com - Licensed according to agreed upon terms and conditions. This listing is courtesy of Cupertino Cal Tex Inc.,



<https://assist2sell.com/listing/201-folsom-st-24g-san-francisco-ca-94105/3yd-mlslca-ml81910698>