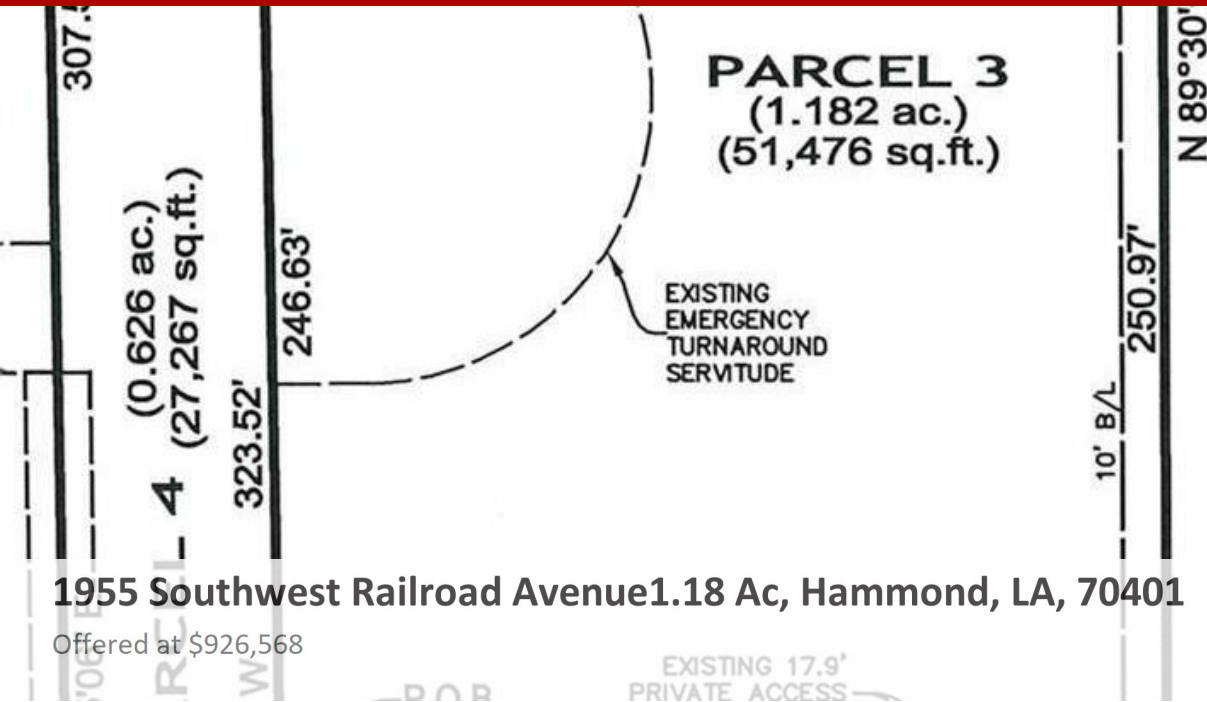


Commercial - Hammond, LA



This parcel includes 1.05 acres of vacant land zoned for highway commercial use lending tremendous development potential visibility and accessibility is from Southwest Railroad Avenue as it sits behind Chik-fil-a/RaceTrac & across the street from Hammond Square Mall at the first red light off of Interstate 12. Excellent for retail, office, medical, hospitality, storage units, or mixture of all. Situated in Flood Zone X & small amount of wet area already mitigated.

0 Bedrooms
0 Bathrooms
51,476 sqft
1.05 acre (lot size)
Built: Unknown year



Scan above on mobile device for directions to this listing

Assist2Sell
vip@assist2sell.com



All information deemed reliable but not guaranteed. If your property is currently listed this is not meant as a solicitation.
©2026 Assist2Sell.com - Licensed according to agreed upon terms and conditions. This listing is courtesy of NextHome, Inc

