



Lot - CAPE CORAL, FL

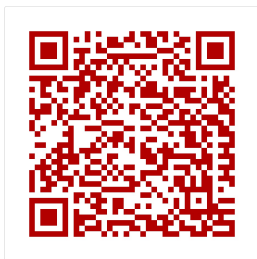
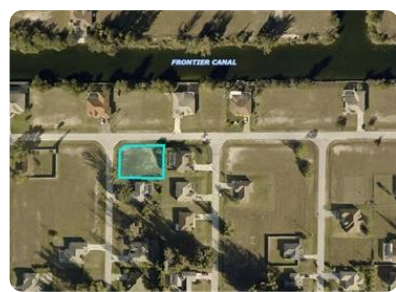


1913 NE 4th PL, CAPE CORAL, FL, 33909

Offered at \$11,000

Great corner lot to build your new home in a nice neighborhood close to a variety of shopping and dining options along nearby Pine Island Road.

 0 Bedrooms
 0 Bathrooms
 Unknown sqft sqft
 0.26 acre (lot size)
 Built: Unknown year



Scan above on mobile device
for directions to this listing

Assist2Sell Partners Realty
(239) 561-2500
eric@wesellleecounty.com

Assist  Sell.

All information deemed reliable but not guaranteed. If your property is currently listed this is not meant as a solicitation.
©2019 Assist2Sell.com - Licensed according to agreed upon terms and conditions. This listing is courtesy of Premier Cape Realty Inc.



<https://assist2sell.com/listing/1913-ne-4th-pl-cape-coral-fl-33909/3yd-fmswfl-219055779>