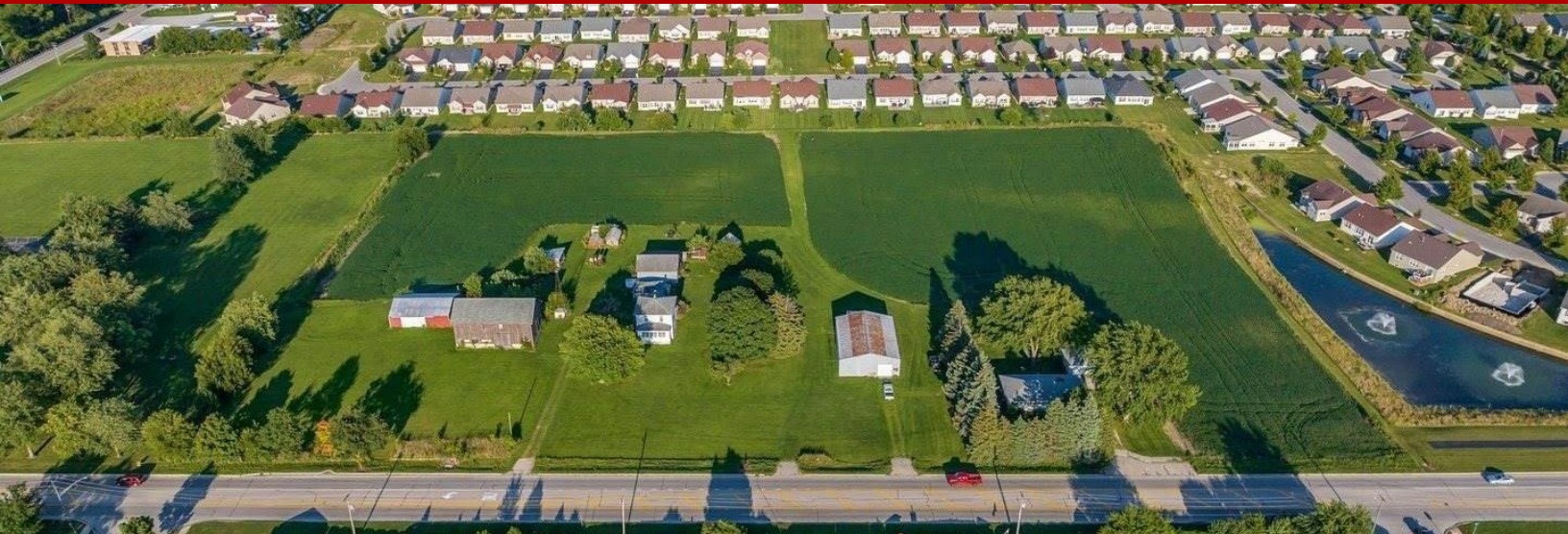


Land - Lockport, IL



1758 South Briggs Street, Lockport, IL, 60441

Offered at \$824,900

12 acres located in the heart of Lockport. This prime property is near the intersection of Briggs and Division. Lockports downtown strip is located less than a mile away with stores, restaurants, bars, boutiques and more. Great schools and daycares close by. Located near Interstate 355 and other major roadways. Land is perfect for development of a subdivision in a town that is growing and expanding! Per city approval, land is ready to build. Utilities, water and sewer are at site.

0 Bedrooms
0 Bathrooms
0 sqft
Built: Unknown year



Scan above on mobile device
for directions to this listing

Assist2Sell
vip@assist2sell.com

Assist2Sell

All information deemed reliable but not guaranteed. If your property is currently listed this is not meant as a solicitation.
©2026 Assist2Sell.com - Licensed according to agreed upon terms and conditions. This listing is courtesy of NextHome, Inc



<https://assist2sell.com/listing/1758-south-briggs-street-lockport-il-60441/3yd-nexthome-211459>