






# Move in ready!

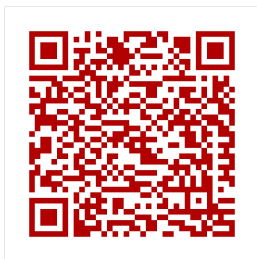
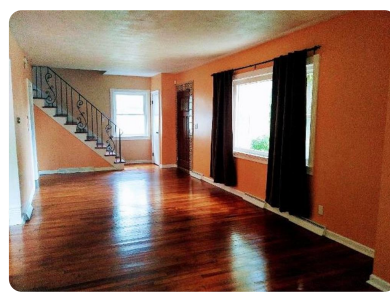
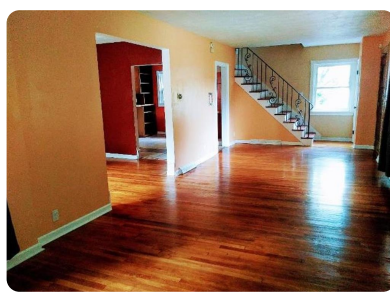
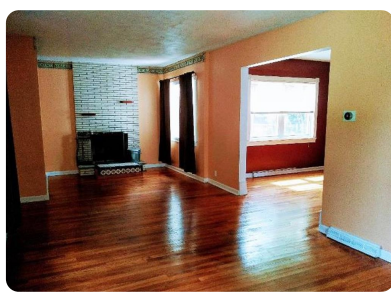
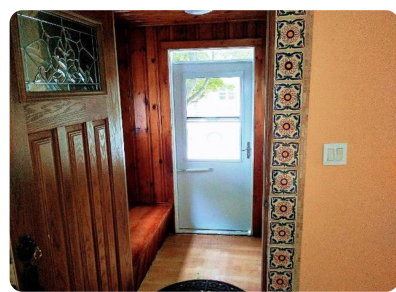


## 15 Sharaf Street, New London, CT, 06320

Offered at \$174,900

4 bedroom, 2 full baths Colonial south of L+M Hospital. Maintained and upgraded by long time owner with many green energy features. Must see gorgeous wood floors, tiled kitchen and baths, energy efficient on demand unlimited hot water. Brand new roof, 2nd floor laundry. EV Charge Station hookup. Curtain drain system in now dry basement ready to finish.

	4 Bedrooms
	2 Bathrooms
	1,700 sqft
	0.1 acres (lot size)
	Built: 1926



Scan above on mobile device  
for directions to this listing

Assist2Sell Stebbins Buyers & Sellers Realty  
Edward Stebbins  
(860) 235-6679  
ESteb510@aol.com

Assist2Sell.

All information deemed reliable but not guaranteed. If your property is currently listed this is not meant as a solicitation.  
©2019 Assist2Sell.com - Licensed according to agreed upon terms and conditions.



<https://assist2sell.com/listing/15-sharaf-street-new-london-ct-06320/3yd-a2sell-701029>