


INVESTMENT with a SHOP and acreage!

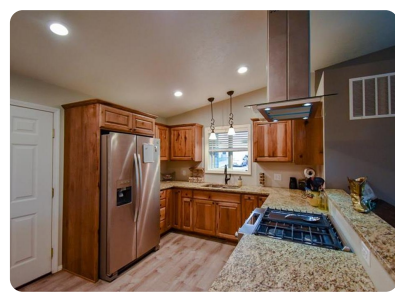
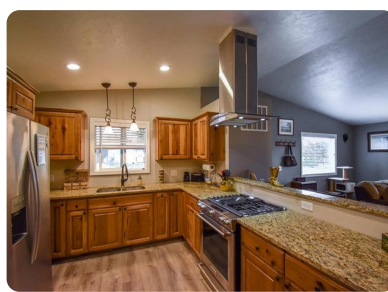


1422 Cedar Avenue, Lewiston, ID, 83501

Offered at \$370,000

Investment opportunity with a shop and acreage! Want to expand your investment, this duplex provides you with 1.2 acres of developable land or an area for your large animals within the city limits. The duplex has been fully rebuilt in 2018. All new granite counter tops in unit A, flooring, and finishes. Laundry hookups in each unit. Unit B has also been newly remodeled with flooring and countertops. Unit B does have a 2nd bedrooms to provide but it would need an egress window in the future.

	3 Bedrooms
	3 Bathrooms
	2,310 sqft
	1.2 acre (lot size)
	Built: 2018



Scan above on mobile device
for directions to this listing

Assist2Sell Discovery Real Estate
Sarah Everett
(208) 798-7822
saraheverett@assist2sell.com

Assist2Sell

All information deemed reliable but not guaranteed. If your property is currently listed this is not meant as a solicitation.
©2019 Assist2Sell.com - Licensed according to agreed upon terms and conditions.



<https://assist2sell.com/listing/1422-cedar-avenue-lewiston-id-83501/3yd-a2sell-771841>