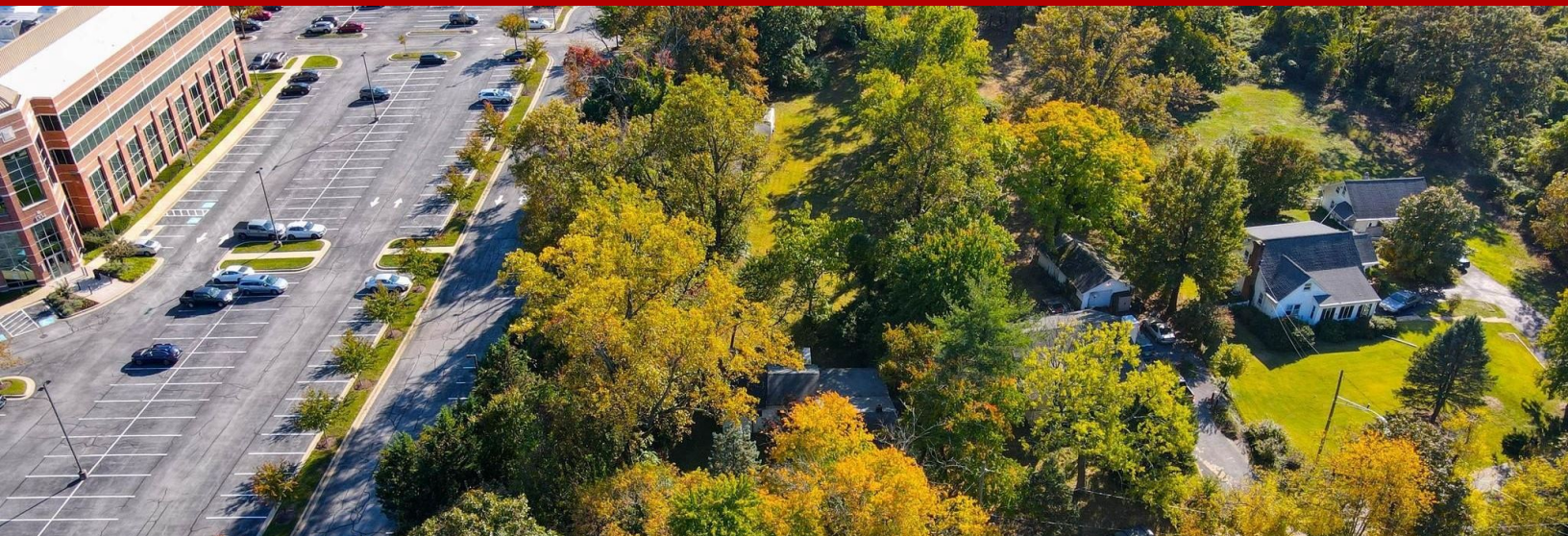


# Commercial - LINTHICUM HEIGHTS, MD



## 1401 Furnace Road, Linthicum Heights, MD, 21090

Offered at \$685,200

Commercial/Residential - Many uses available. Tear down the house (value is in the land) or use the structure for an office or business? There are hotels nearby to the East of the property and South of. Neighboring homes are also commercial/residential but don't share the same value as this land (see tax report). Priced at the Tax Assessment value which is commonly \$30-\$50,000. under true value. Close to BWI, hotels, rental car services and other businesses like Northrup Grumman. Many uses possible: office suites, business, skiff space, service to hotels, warehouse/storage. A new warehouse is to be built up the street. I have drawings.

0 Bedrooms

0 Bathrooms

Unknown sqft sqft

0.73 acre (lot size)

Built: 1952



Scan above on mobile device  
for directions to this listing

Assist2Sell  
vip@assist2sell.com

Assist2Sell.

All information deemed reliable but not guaranteed. If your property is currently listed this is not meant as a solicitation.  
©2025 Assist2Sell.com - Licensed according to agreed upon terms and conditions. This listing is courtesy of Executive Choice Realty



<https://assist2sell.com/listing/1401-furnace-road-linthicum-heights-md-21090/3yd-trendpa-mdaa2047302>