






# Traditional, Single-Family - Houston, TX

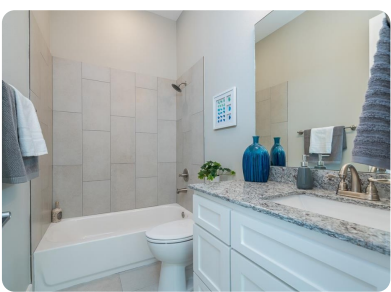
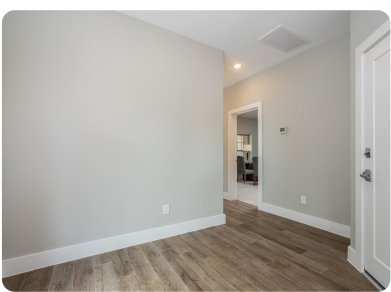


## 1216 Murrayhill Drive, Houston, TX, 77043

Offered at \$424,900

New construction just minutes from both Memorial City Mall and CityCentre! Located in the desirable Spring Branch school district, this private, gated enclave of only ten homes - surrounded by a neighborhood of established single-family homes - provides outstanding quality and space for a price much lower than comparable product in the area! Gleaming wood floors, designer paint, luxurious granite counters, under-cabinet lighting, and stainless appliance packages reflect the elegance of the property, and job-built cabinets, stone accents, and high quality brick speak to the soundness of construction. This unit is ELEVATOR CAPABLE for owners who don't want to climb stairs, and plenty of storage space available for those that are downsizing from a larger home! You'll like the space between homes, too – 8 full feet away from your neighbors! First check out the link above for an immersive virtual tour, then swing by TODAY to experience for yourself the difference!

|  |
|--|
|  4 Bedrooms               |
|  4 Bathrooms              |
|  2,601 sqft               |
|  2,294 sq. ft. (lot size) |
|  Built: 2018            |



Scan above on mobile device  
for directions to this listing

Assist2Sell Buyer and Sellers Choice  
(281) 398-5289  
stewartj@assist2sell.com



All information deemed reliable but not guaranteed. If your property is currently listed this is not meant as a solicitation.  
©2020 Assist2Sell.com - Licensed according to agreed upon terms and conditions. This listing is courtesy of NextHome Realty Center

