

Condo/Twnhouse/Twin/Patio, Twin Home - Duluth, MN

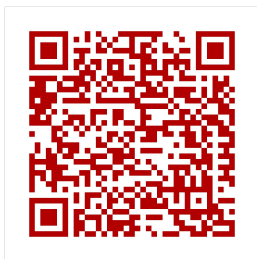
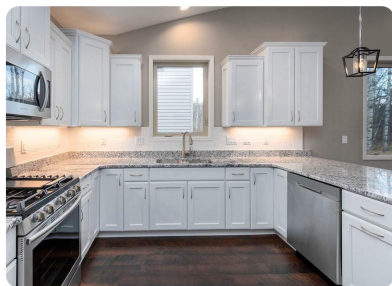
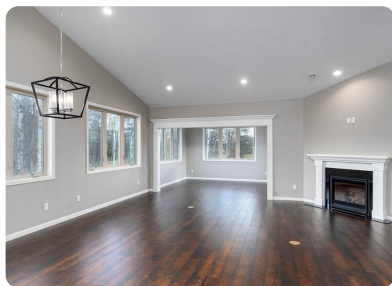
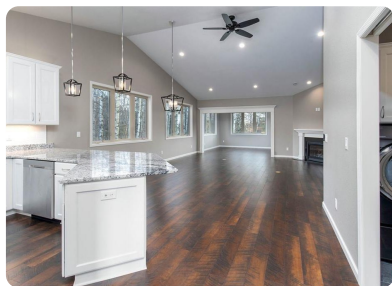


1206 Butternut Ave, Duluth, MN, 55811

Offered at \$425,000

Spectacular town home in the Maple Ridge Development. This design features 3 bedrooms, 2 bathrooms, a full basement and a large two car attached garage. Open concept living with vaulted ceilings in the living room which features a gas fireplace and walk out to a potential deck over looking the back yard. The kitchen boasts beautiful cabinetry, quartz countertops and a center island for extra storage and seating. The master bedroom has a large walk in closet and private en-suite. In addition to two more bedroom's and bath on this floor you also have main floor laundry. Home to be completed in April 2020. Set up your private showing today

	3 Bedrooms
	2 Bathrooms
	1,620 sqft
	0.06 acre (lot size)
	Built: 2020



Scan above on mobile device
for directions to this listing

Assist2Sell
info@assist2sell.com

Assist  Sell.

All information deemed reliable but not guaranteed. If your property is currently listed this is not meant as a solicitation.
©2020 Assist2Sell.com - Licensed according to agreed upon terms and conditions. This listing is courtesy of Coldwell Banker East West Realty



<https://assist2sell.com/listing/1206-butternut-ave-duluth-mn-55811/3yd-daarmn-6087813>