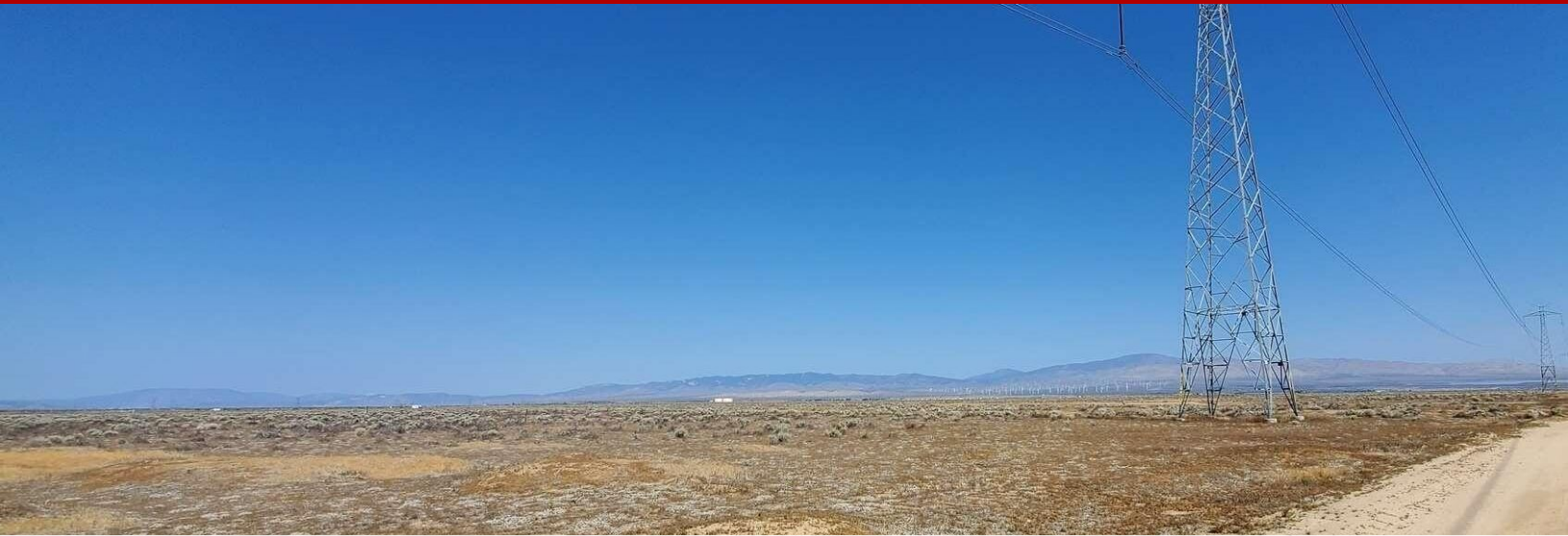


# D - Antelope Acres, CA



## 12000 W Avenue B14, Antelope Acres, CA, 93536

Offered at \$15,000

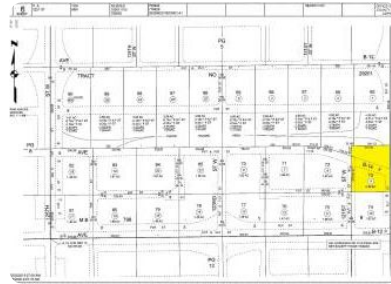
Easy payments, Seller finances Any Credit OK, Call for details 1 Acres  
"Approximate" In Antelope Acres Address is just an approximate.  
Corner stakes (if any) are to just give an idea. "NO survey has been  
done". Flat land, great views of the mountains, accessible. Just 1mi N of  
Hwy 138 (Paved) Text or email for more pictures. We have many others

0 Bedrooms

0 Bathrooms

Unknown sqft sqft

Built: Unknown year



Scan above on mobile device  
for directions to this listing

Assist2Sell ESJ Properties  
(661) 794-2021  
Henry@Assist2Sell.com

Assist2Sell

All information deemed reliable but not guaranteed. If your property is currently listed this is not meant as a solicitation.  
©2026 Assist2Sell.com - Licensed according to agreed upon terms and conditions. This listing is courtesy of LA Best Homes



<https://assist2sell.com/listing/12000-w-avenue-b14-antelope-acres-ca-93536/3yd-gavarca-22005257>