

# Unimproved Land - Maypearl, TX

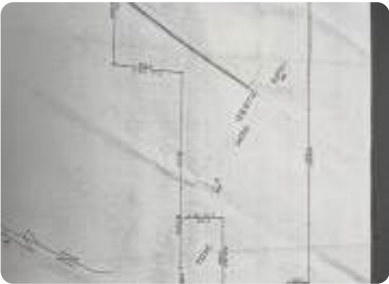


## 11874 Fm 157, Maypearl, TX, 76064

Offered at \$4,755,450

Excellent 135.87 acre tract ready for development or investment in the rapidly developing diamond created by Venus, Midlothian, Waxahachie, and Maypearl. The property has over 1100 feet of frontage on FM 157 which is a main arterial between Maypearl and Arlington (Cooper Street in Arlington). This location is at the apex of the path of development coming west from Waxahachie down 66 and heading south down 157 from Venus. The property also has three homes in good condition, a barn, and a shop, also in good condition, with water and electric. All structures are included in the listing price.

0 Bedrooms
0 Bathrooms
Unknown sqft sqft
135.87 acre (lot size)
Built: 2015



Scan above on mobile device  
for directions to this listing

Assist2Sell  
vip@assist2sell.com



All information deemed reliable but not guaranteed. If your property is currently listed this is not meant as a solicitation.  
©2026 Assist2Sell.com - Licensed according to agreed upon terms and conditions. This listing is courtesy of Younger Partners Dallas, LLC

