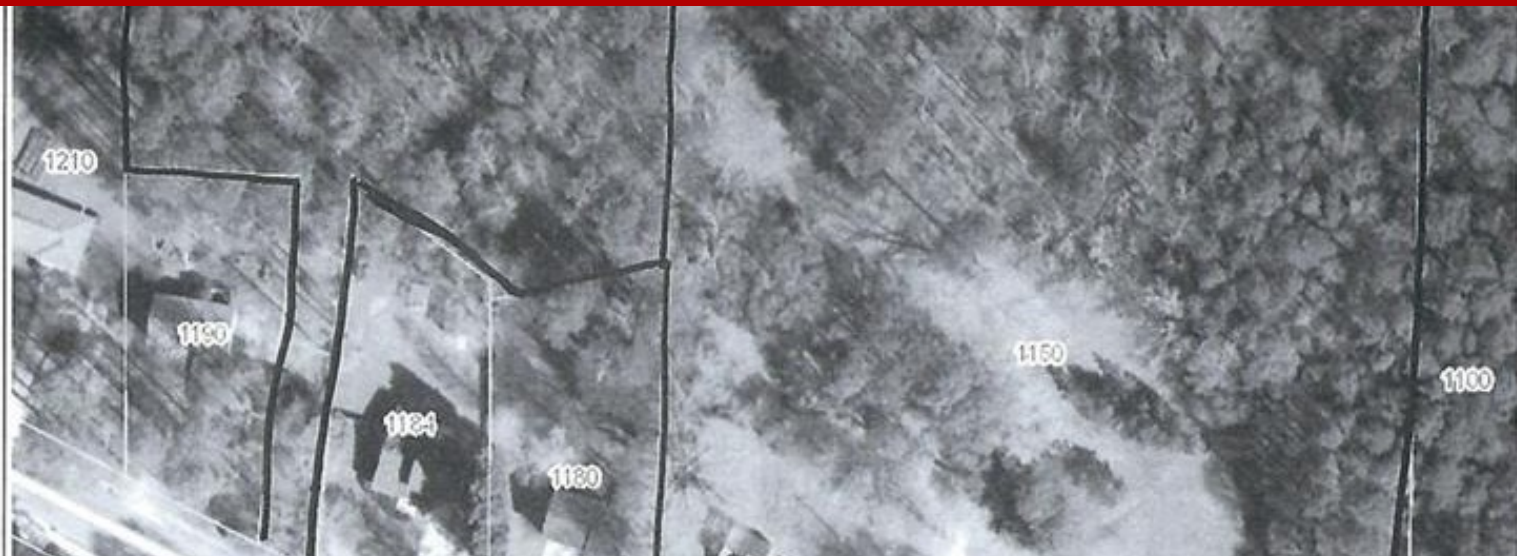







# Other - Mableton, GA



## 1150 CLAY Road SW, Mableton, GA, 30126

Offered at \$475,000

Developer/Builder Opportunity! Beautiful rolling topography with pasture and hardwoods. Two tracts totaling approximately 6.75 acres (5.00+1.75). Perfect for a small subdivision. Currently zoned R-30 with future land use of R-15. All utilities available. Great location with easy access to I-20 to I-285.

|  |
|--|
|  2 Bedrooms           |
|  1 Bathrooms          |
|  Unknown sqft sqft    |
|  6.75 acre (lot size) |
|  Built: 1942         |



Scan above on mobile device for directions to this listing

Assist2Sell  
info@assist2sell.com

Assist2Sell

All information deemed reliable but not guaranteed. If your property is currently listed this is not meant as a solicitation.  
©2020 Assist2Sell.com - Licensed according to agreed upon terms and conditions. This listing is courtesy of Atlanta Communities Real Estate Brokerage



<https://assist2sell.com/listing/1150-clay-road-sw-mableton-ga-30126/3yd-fmlsga-6602907>