


Single Family - Eagle, ID

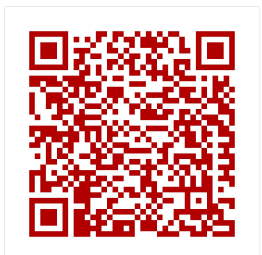
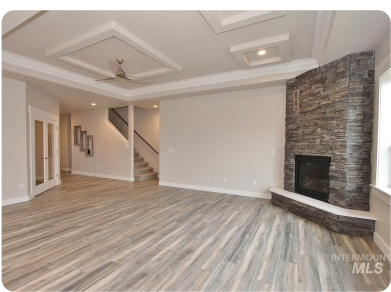
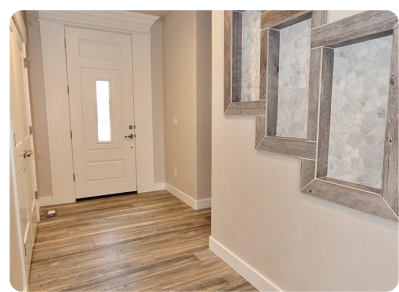


108 S River Creek Ave, Eagle, ID, 83616

Offered at \$484,000

Quality craftsmanship, custom built home! Located close to the Boise river and easy access to the greenbelt. Excellent layout with main level master bedroom. Property features a spacious kitchen w/ stainless steel appliances, under mount sink, quartz counter tops, Large island, and huge walk-in pantry. In the lavish master suite, there's a roomy walk-in closet and a tiled walk-in shower with rain shower head and separate soaker tub. The fully fenced rear yard is low maintenance, this is a must see!

 4 Bedrooms
 3 Bathrooms
 2,776 sqft
 0.18 acre (lot size)
 Built: 2018



Scan above on mobile device for directions to this listing

Assist2Sell Buyers & Sellers Realty
(208) 887-7800
office@assist2sellboise.com



All information deemed reliable but not guaranteed. If your property is currently listed this is not meant as a solicitation.
©2020 Assist2Sell.com - Licensed according to agreed upon terms and conditions. This listing is courtesy of Keller Williams Realty Boise



<https://assist2sell.com/listing/108-s-river-creek-ave-eagle-id-83616/3yd-imlsid-98748467>