





RES-Single Family, Traditional - Southlake, TX

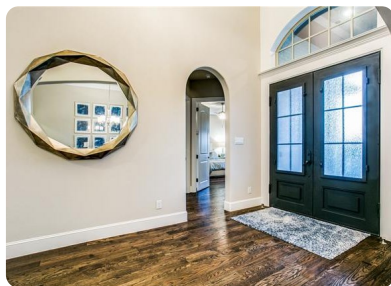


1024 Evergreen Place, Southlake, TX, 76092

Offered at \$1,530,000

Gorgeous Cartwright floor plan on corner lot with outdoor living, lush landscape, and relaxing water feature. Enter through double iron doors to welcoming hardwood floors, arched openings and barrel ceiling. Chef's kitchen fitted with Wolf gas range, pot filler, over-sized island, double ovens, Sub Zero fridge, and upgraded cabinets, ideal for entertaining. Master suite complete with spa like bath featuring a large soaking tub, walk-thru shower, separate vanities and walk-in closets. Backyard living center features oversized covered patio with powered screens, stone FP, and outdoor kitchen overlooking a spectacular fountain feature wall. Walking distance to Southlake Town Square, restaurants and shopping.

	4 Bedrooms
	6 Bathrooms
	4,664 sqft
	0.38 acre (lot size)
	Built: 2016



Scan above on mobile device
for directions to this listing

Assist2Sell
info@assist2sell.com

Assist2Sell

All information deemed reliable but not guaranteed. If your property is currently listed this is not meant as a solicitation.
©2019 Assist2Sell.com - Licensed according to agreed upon terms and conditions. This listing is courtesy of JP & Associates REALTORS



<https://assist2sell.com/listing/1024-evergreen-place-southlake-tx-76092/3yd-ntreis-14114598>